



ISSUED FOR TENDER  
APRIL 18, 2023

**99 AVENUE WEST TRAIL DEVELOPMENT**

TOWN OF PEACE RIVER, ALBERTA



**McElhanney**

Unit 201  
13455 114 Avenue  
Edmonton AB  
Canada T5M 2E2  
Tel 780 809 3200

PH (780) 809 3200  
FAX (780) 452 7033



**UTILITY LOCATES**  
 NO RESPONSIBILITY IS IMPLIED OR ASSUMED BY THE ENGINEER/LANDSCAPE ARCHITECT AS TO THE LOCATION AND ELEVATION OF ANY UTILITY. THE CONTRACTOR IS RESPONSIBLE FOR DETERMINING THE EXISTENCE AND LOCATION OF ALL UTILITIES THAT MAY BE IMPACTED AND MUST CONTACT THE VARIOUS UTILITY COMPANIES FOR THIS SITE PRIOR TO COMMENCEMENT OF ANY OPERATIONS. PROVIDE ENGINEER/LANDSCAPE ARCHITECT WITH COPY OF ALL LOCATE REPORTS.

**DRAWING INDEX**

L000	COVER SHEET
L001	KEY PLAN & DRAWING INDEX
L101	SITE PREPARATION PLAN
L102	GRADING & LAYOUT PLAN
L301	LANDSCAPE DETAILS

**KEY PLAN**

SCALE 1:5000

Rev	Date	Description	Drawn	Design	App'd
00	2023-04-18	ISSUED FOR TENDER	JM	CO	CA

THIS DRAWING AND DESIGN IS THE PROPERTY OF MCELHANNNEY AND SHALL NOT BE USED, REUSED OR REPRODUCED WITHOUT THE CONSENT OF MCELHANNNEY. MCELHANNNEY WILL NOT BE HELD RESPONSIBLE FOR THE IMPROPER OR UNAUTHORIZED USE OF THIS DRAWING AND DESIGN.

THIS DRAWING AND DESIGN HAS BEEN PREPARED FOR THE CLIENT IDENTIFIED, TO MEET THE STANDARDS AND REQUIREMENTS OF THE APPLICABLE PUBLIC AGENCIES AT THE TIME OF PREPARATION. MCELHANNNEY, ITS EMPLOYEES, SUBCONSULTANTS AND AGENTS WILL NOT BE LIABLE FOR ANY LOSSES OR OTHER CONSEQUENCES RESULTING FROM THE USE OR RELIANCE UPON, OR ANY CHANGES MADE TO, THIS DRAWING, BY ANY THIRD PARTY, INCLUDING CONTRACTORS, SUPPLIERS, CONSULTANTS AND STAKEHOLDERS, OR THEIR EMPLOYEES OR AGENTS, WITHOUT MCELHANNNEY'S PRIOR WRITTEN CONSENT.

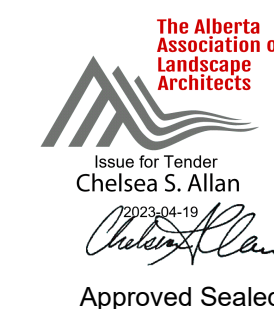
INFORMATION ON EXISTING UNDERGROUND FACILITIES MAY NOT BE COMPLETE OR ACCURATE. MCELHANNNEY, ITS EMPLOYEES AND DIRECTORS ARE NOT RESPONSIBLE NOR LIABLE FOR THE LOCATION OF ANY UNDERGROUND CONDUITS, PIPES, CABLES OR OTHER FACILITIES WHETHER SHOWN OR OMITTED FROM THIS PLAN. PRIOR TO CONSTRUCTION CONTRACTOR SHALL EXPOSE LOCATIONS OF ALL EXISTING FACILITIES BY HAND DIGGING OR HYDROVAC AND ADVISE THE ENGINEER OF POTENTIAL CONFLICTS.

ORIGINAL DWG SIZE: ANSI D (22" x 34")



Unit 201  
 13455 114 Avenue NW  
 Edmonton AB  
 Canada T5M 2E2  
 Tel 780 809 3200

Permit

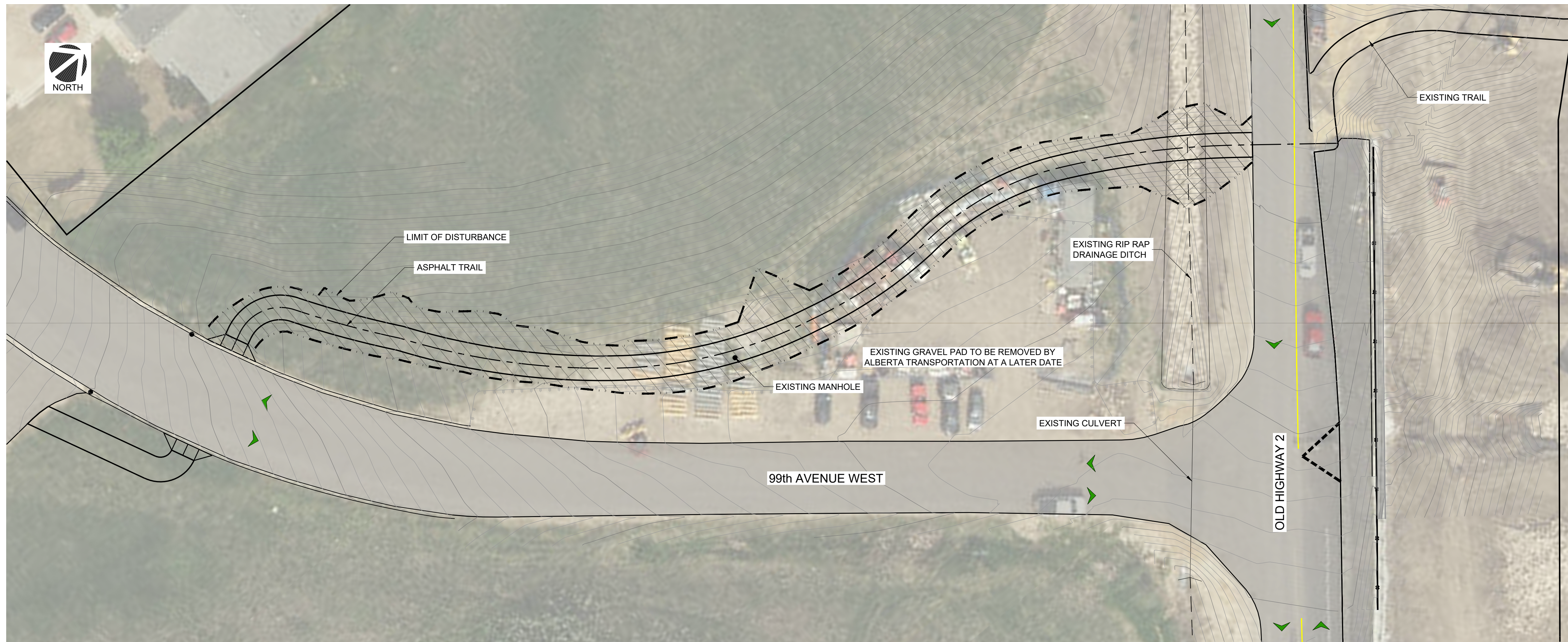


**TOWN OF PEACE RIVER**  
 9911 100 Street, Peace River, AB, T8S 1S4

**99 AVE WEST TRAIL DEVELOPMENT**  
 Key Plan & Drawing Index

PEACE RIVER, AB

Drawing No.	
<b>L001</b>	
Project Number	Rev.
2131-00611-05	00



**UTILITY LOCATES**  
 NO RESPONSIBILITY IS IMPLIED OR ASSUMED BY THE ENGINEER/LANDSCAPE ARCHITECT AS TO THE LOCATION AND ELEVATION OF ANY UTILITY. THE CONTRACTOR IS RESPONSIBLE FOR DETERMINING THE EXISTENCE AND LOCATION OF ALL UTILITIES THAT MAY BE IMPACTED AND MUST CONTACT THE VARIOUS UTILITY COMPANIES FOR THIS SITE PRIOR TO COMMENCEMENT OF ANY OPERATIONS. PROVIDE ENGINEER/LANDSCAPE ARCHITECT WITH COPY OF ALL LOCATE REPORTS.

**LEGEND**

	TOPSOIL REMOVAL
	RIP RAP REMOVAL
	PROPERTY LINE
	EXISTING MAJOR CONTOUR - 1m
	EXISTING MINOR CONTOUR - 0.5m
	LIMIT OF DISTURBANCE
	EXISTING DRAINAGE SWALE
	EXISTING CULVERT
	EXISTING GUARD RAIL
	EXISTING JERSEY BARRIERS
	EXISTING FENCE
	EDGE OF EXISTING GRAVEL PAD

99th AVE WEST TRAIL - SITE PREPARATION PLAN

SCALE 1:300

Rev	Date	Description	Drawn	Design	App'd
00	2023-04-18	ISSUED FOR TENDER	JM	CO	CA

THIS DRAWING AND DESIGN IS THE PROPERTY OF MCELHANNNEY AND SHALL NOT BE USED, REUSED OR REPRODUCED WITHOUT THE CONSENT OF MCELHANNNEY. MCELHANNNEY WILL NOT BE HELD RESPONSIBLE FOR THE IMPROPER OR UNAUTHORIZED USE OF THIS DRAWING AND DESIGN.

THIS DRAWING AND DESIGN HAS BEEN PREPARED FOR THE CLIENT IDENTIFIED, TO MEET THE STANDARDS AND REQUIREMENTS OF THE APPLICABLE PUBLIC AGENCIES AT THE TIME OF PREPARATION. MCELHANNNEY, ITS EMPLOYEES, SUBCONSULTANTS AND AGENTS WILL NOT BE LIABLE FOR ANY LOSSES OR OTHER CONSEQUENCES RESULTING FROM THE USE OR RELIANCE UPON, OR ANY CHANGES MADE TO, THIS DRAWING, BY ANY THIRD PARTY, INCLUDING CONTRACTORS, SUPPLIERS, CONSULTANTS AND STAKEHOLDERS, OR THEIR EMPLOYEES OR AGENTS, WITHOUT MCELHANNNEY'S PRIOR WRITTEN CONSENT.

INFORMATION ON EXISTING UNDERGROUND FACILITIES MAY NOT BE COMPLETE OR ACCURATE. MCELHANNNEY, ITS EMPLOYEES AND DIRECTORS ARE NOT RESPONSIBLE NOR LIABLE FOR THE LOCATION OF ANY UNDERGROUND CONDUITS, PIPES, CABLES OR OTHER FACILITIES WHETHER SHOWN OR OMITTED FROM THIS PLAN. PRIOR TO CONSTRUCTION CONTRACTOR SHALL EXPOSE LOCATIONS OF ALL EXISTING FACILITIES BY HAND DIGGING OR HYDROVAC AND ADVISE THE ENGINEER OF POTENTIAL CONFLICTS.

ORIGINAL DWG SIZE: ANSI D (22" x 34")

**McElhanney**

Unit 201  
 13455 114 Avenue NW  
 Edmonton AB  
 Canada T5M 2E2  
 Tel 780 809 3200

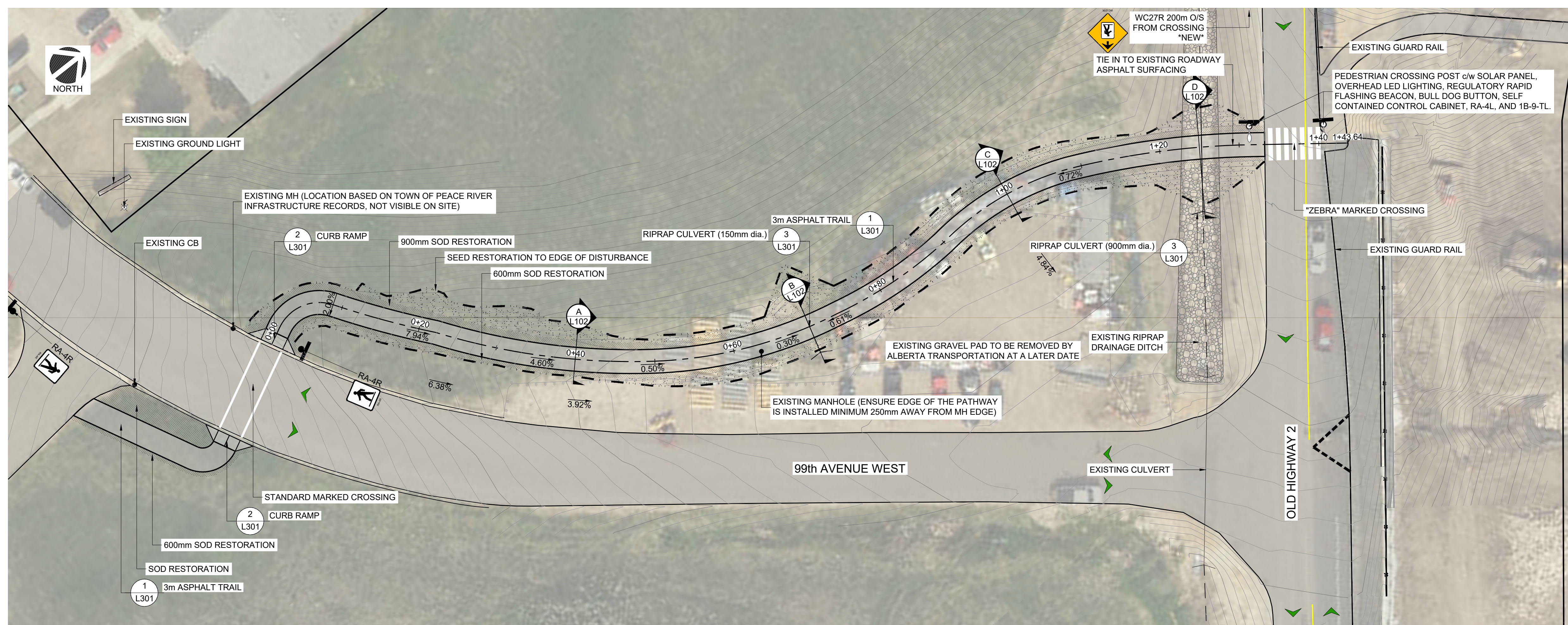
The Alberta Association of Landscape Architects  
 Issue for Tender  
 Chelsea S. Allan  
 2023-04-19  
*Chelsea S. Allan*  
 Approved Sealed

**TOWN OF PEACE RIVER**  
 9911 100 Street, Peace River, AB, T8S 1S4

**99 AVE WEST TRAIL DEVELOPMENT**  
 Site Preparation Plan

PEACE RIVER, AB

Drawing No.	<b>L101</b>
Project Number	2131-00611-05
Rev.	00



**UTILITY LOCATES**  
 NO RESPONSIBILITY IS IMPLIED OR ASSUMED BY THE ENGINEER/LANDSCAPE ARCHITECT AS TO THE LOCATION AND ELEVATION OF ANY UTILITY. THE CONTRACTOR IS RESPONSIBLE FOR DETERMINING THE EXISTENCE AND LOCATION OF ALL UTILITIES THAT MAY BE IMPACTED AND MUST CONTACT THE VARIOUS UTILITY COMPANIES FOR THIS SITE PRIOR TO COMMENCEMENT OF ANY OPERATIONS. PROVIDE ENGINEER/LANDSCAPE ARCHITECT WITH COPY OF ALL LOCATE REPORTS.

- LEGEND**
- ASPHALT WALK (1 L301)
  - RIP RAP (EXISTING / REPURPOSED)
  - SOD ON 150mm DEPTH TOPSOIL. NOTE: SOD TO BACK OF CURB & EDGE OF SIDEWALKS. ENSURE SMOOTH TRANSITION WITH ADJACENT SURFACES
  - SEED ON 150mm DEPTH TOPSOIL. NOTE: SOD TO BACK OF CURB & EDGE OF SIDEWALKS. ENSURE SMOOTH TRANSITION WITH ADJACENT SURFACES
  - DRY MIXED WOOD
    - 35% SLENDER WHEAT GRASS (*Agropyron trachycaulum*)
    - 20% FRINGED BROME (*Bromus ciliatus*)
    - 15% NORTHERN WHEAT GRASS (*Agropyron dasystachyum*)
    - 10% TUFTED HAIR GRASS (*Deschampsia cespitosa*)
    - 10% ROCKY MOUNTAIN FESCUE (*Festuca saximontana*)
    - 10% FOWL BLUEGRASS (*Poa palustris*)
  - BROADCAST SEED AT 20kg/ha
  - PROPERTY LINE
  - EXISTING MAJOR CONTOUR - 1m
  - EXISTING MINOR CONTOUR - 0.5m
  - LIMIT OF DISTURBANCE
  - EXISTING DRAINAGE SWALE
  - EXISTING CULVERT
  - PROPOSED CULVERT (3 L301)
  - EXISTING GUARD RAIL
  - EXISTING JERSEY BARRIERS
  - EXISTING FENCE
  - EDGE OF EXISTING GRAVEL PAD
  - PROPOSED CURB RAMP (2 L301)
  - EXISTING GROUND LIGHT
  - PROPOSED OVERHEAD LIGHT
  - EXISTING CATCH BASIN / MANHOLE
  - PROPOSED SIGN
  - RA-4R PEDESTRIAN CROSSING SIGN
  - WC-27R PEDESTRIAN CROSSING AHEAD SIGN

99th AVE WEST TRAIL - GRADING & LAYOUT PLAN

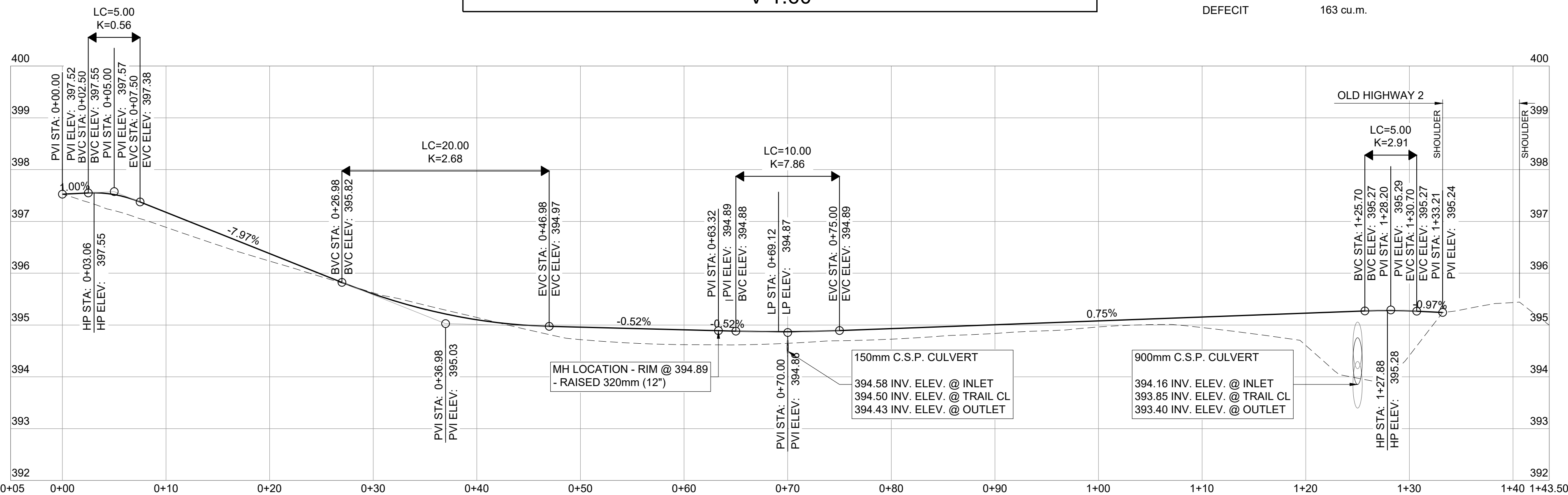
SCALE 1:300

- LEGEND**
- ORIGINAL GRADE PROFILE
  - PROPOSED TRAIL PROFILE

**ALIGNMENT: AL-CL-PATH4**  
**PROFILE VIEW: 3m TRAIL - VERTICAL ALIGNMENT PROFILE**  
 H 1:300  
 V 1:60

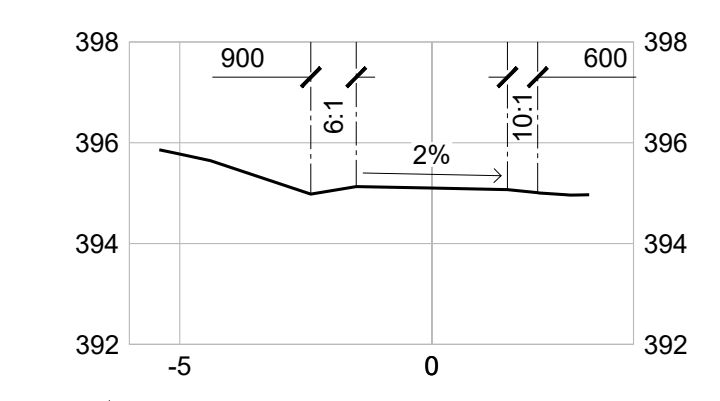
**CUT FILL VOLUMES**

CUT MATERIAL	32 cu.m.
FILL MATERIAL	195 cu.m.
DEFECIT	163 cu.m.

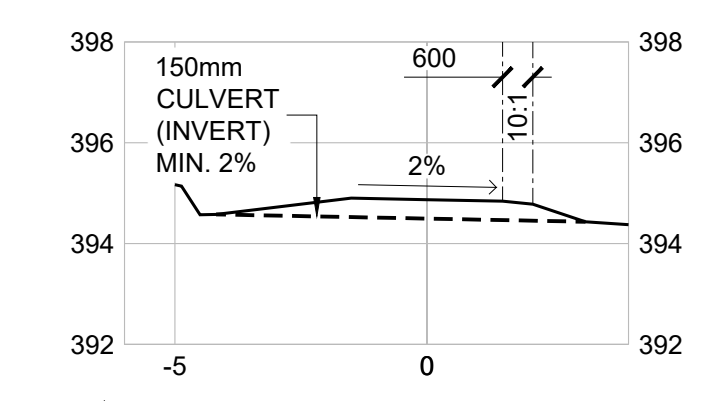


99th AVE TRAIL - TRAIL CENTERLINE PROFILE

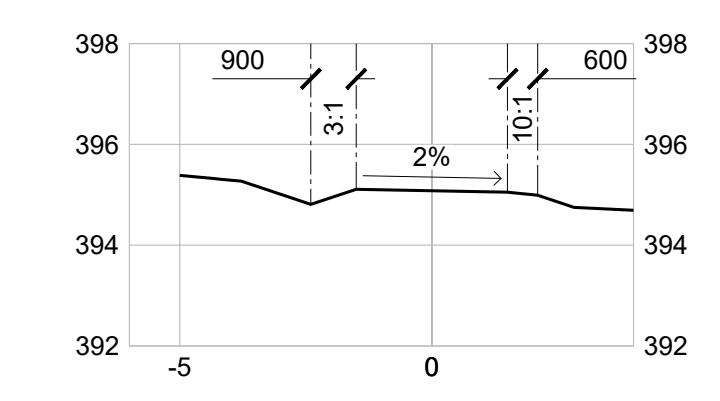
H 1:300  
V 1:60



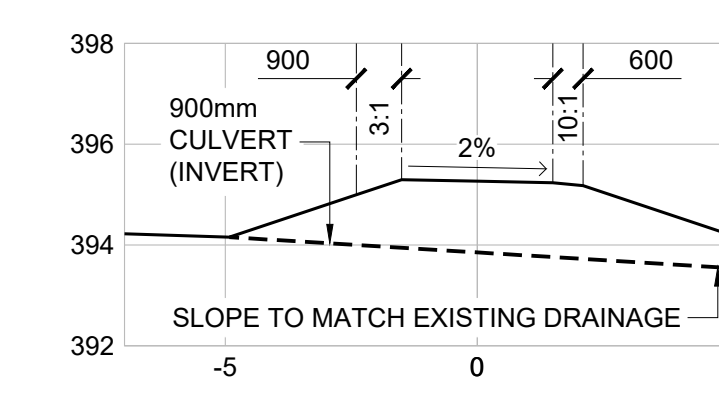
TRAIL SECTION - STA 0+40  
SCALE H 1:150  
V 1:75



TRAIL SECTION - STA 0+70  
SCALE H 1:150  
V 1:75



TRAIL SECTION - STA 1+00  
SCALE H 1:150  
V 1:75



TRAIL SECTION - STA 1+25  
SCALE H 1:150  
V 1:75

- NOTES**
- ALL DAYLIGHTING TO EXISTING GRADES 3:1

Rev	Date	Description	Drawn	Design	App'd
00	2023-04-18	ISSUED FOR TENDER	JM	CO	CA

THIS DRAWING AND DESIGN IS THE PROPERTY OF MCELHANNNEY AND SHALL NOT BE USED, REUSED OR REPRODUCED WITHOUT THE CONSENT OF MCELHANNNEY. MCELHANNNEY WILL NOT BE HELD RESPONSIBLE FOR THE IMPROPER OR UNAUTHORIZED USE OF THIS DRAWING AND DESIGN.

THIS DRAWING AND DESIGN HAS BEEN PREPARED FOR THE CLIENT IDENTIFIED, TO MEET THE STANDARDS AND REQUIREMENTS OF THE APPLICABLE PUBLIC AGENCIES AT THE TIME OF PREPARATION. MCELHANNNEY, ITS EMPLOYEES, SUBCONSULTANTS AND AGENTS WILL NOT BE LIABLE FOR ANY LOSSES OR OTHER CONSEQUENCES RESULTING FROM THE USE OR RELIANCE UPON, OR ANY CHANGES MADE TO, THIS DRAWING, BY ANY THIRD PARTY, INCLUDING CONTRACTORS, SUPPLIERS, CONSULTANTS AND STAKEHOLDERS, OR THEIR EMPLOYEES OR AGENTS, WITHOUT MCELHANNNEY'S PRIOR WRITTEN CONSENT.

INFORMATION ON EXISTING UNDERGROUND FACILITIES MAY NOT BE COMPLETE OR ACCURATE. MCELHANNNEY, ITS EMPLOYEES AND DIRECTORS ARE NOT RESPONSIBLE FOR THE LOCATION OF ANY UNDERGROUND CONDUITS, PIPES, CABLES OR OTHER FACILITIES WHETHER SHOWN OR OMITTED FROM THIS PLAN. PRIOR TO CONSTRUCTION CONTRACTOR SHALL EXPOSE LOCATIONS OF ALL EXISTING FACILITIES BY HAND DIGGING OR HYDROVAC AND ADVISE THE ENGINEER OF POTENTIAL CONFLICTS.

ORIGINAL DWG SIZE: ANSI D (22" x 34")



Unit 201  
 13455 114 Avenue NW  
 Edmonton AB  
 Canada T5M 2E2  
 Tel 780 809 3200



**TOWN OF PEACE RIVER**  
 9911 100 Street, Peace River, AB, T8S 1S4

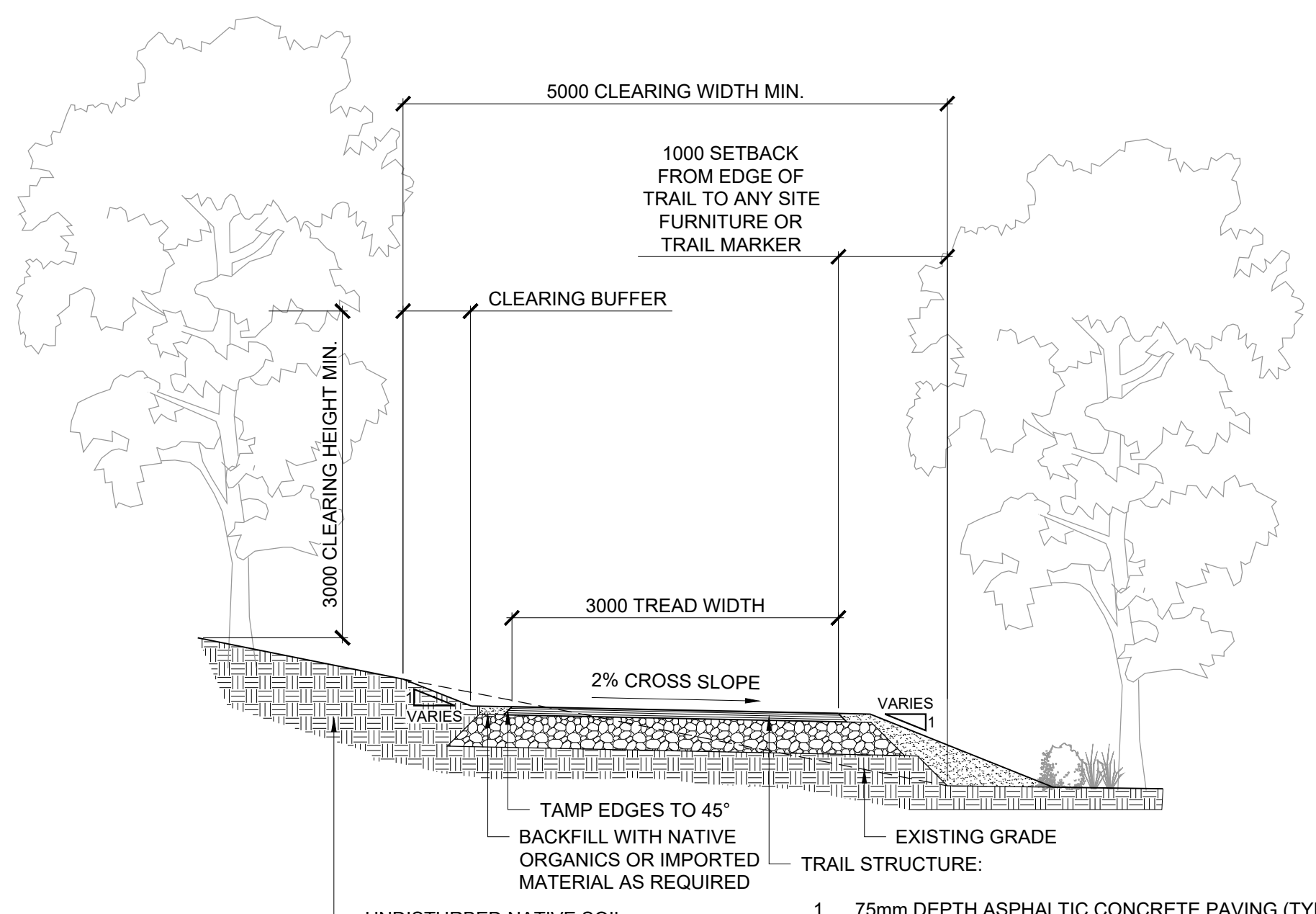
**99 AVE WEST TRAIL DEVELOPMENT**  
 Grading & Layout Plan

PEACE RIVER, AB

Drawing No. **L102**

Project Number 2131-00611-05

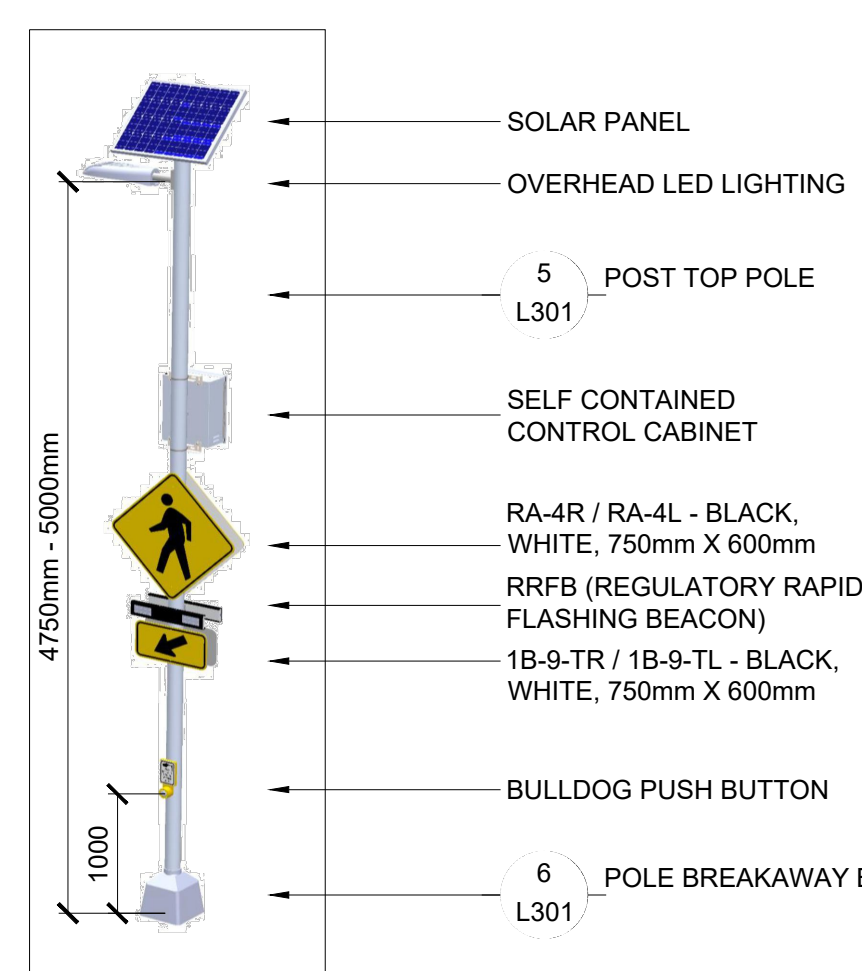
Rev. 00



NOTES:

- ALL DIMENSIONS ARE IN MILLIMETERS.
- SUBGRADE PREPARATION TO BE DETERMINED ACCORDING TO SPECIFIC SOIL CONDITIONS AND APPROVED BY OWNER'S REPRESENTATIVE OR CONSULTANT PRIOR TO CONSTRUCTION.
- BALANCE CUT & FILL ACROSS SECTION.
- 75mm DEPTH ASPHALTIC CONCRETE PAVING (TYPE S3)
- 300mm DEPTH 20mm DIA. GRAVEL COMPACTED TO 98% S.P.D.
- PROVISIONAL - GEOTEXTILE MEMBRANE UNDER GRAVEL (NILEX WOVEN GEOTEXTILE 2006 OR APPROVED EQUIVALENT) EXTEND 300mm BEYOND TRAIL WIDTH, CONTINUOUS.
- NATIVE SUBGRADE SCARIFIED AND COMPACTED TO 100% S.P.D. - FREE OF TOPSOIL, ROOTS AND/OR DEBRIS
- COMMON FILL - CLEAN CLAY OR GRANULAR MATERIAL PLACED OVER APPROVED SUBGRADE AND COMPACTED TO 100% S.P.D.

1 3m ASPHALT TRAIL SCALE H 1:50



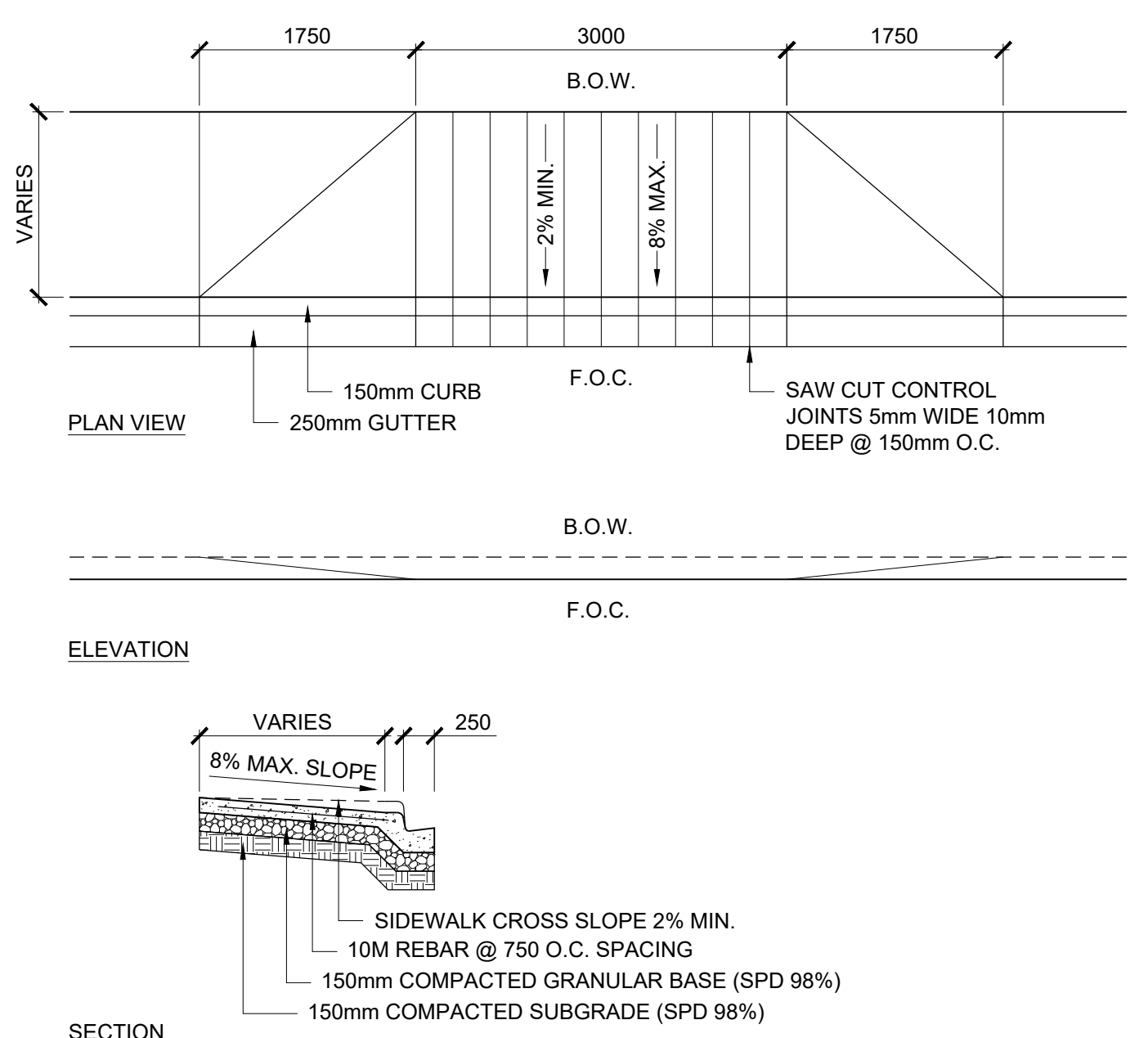
NOTES:

- RRFB (REGULATORY RAPID FLASHING BEACON) AND OTHER EQUIPMENT TO BE INSTALLED AS PER MANUFACTURER SPECIFICATIONS.

4 RRFB SIGNAGE AND LIGHTING SCALE H 1:50

FURNITURE SCHEDULE

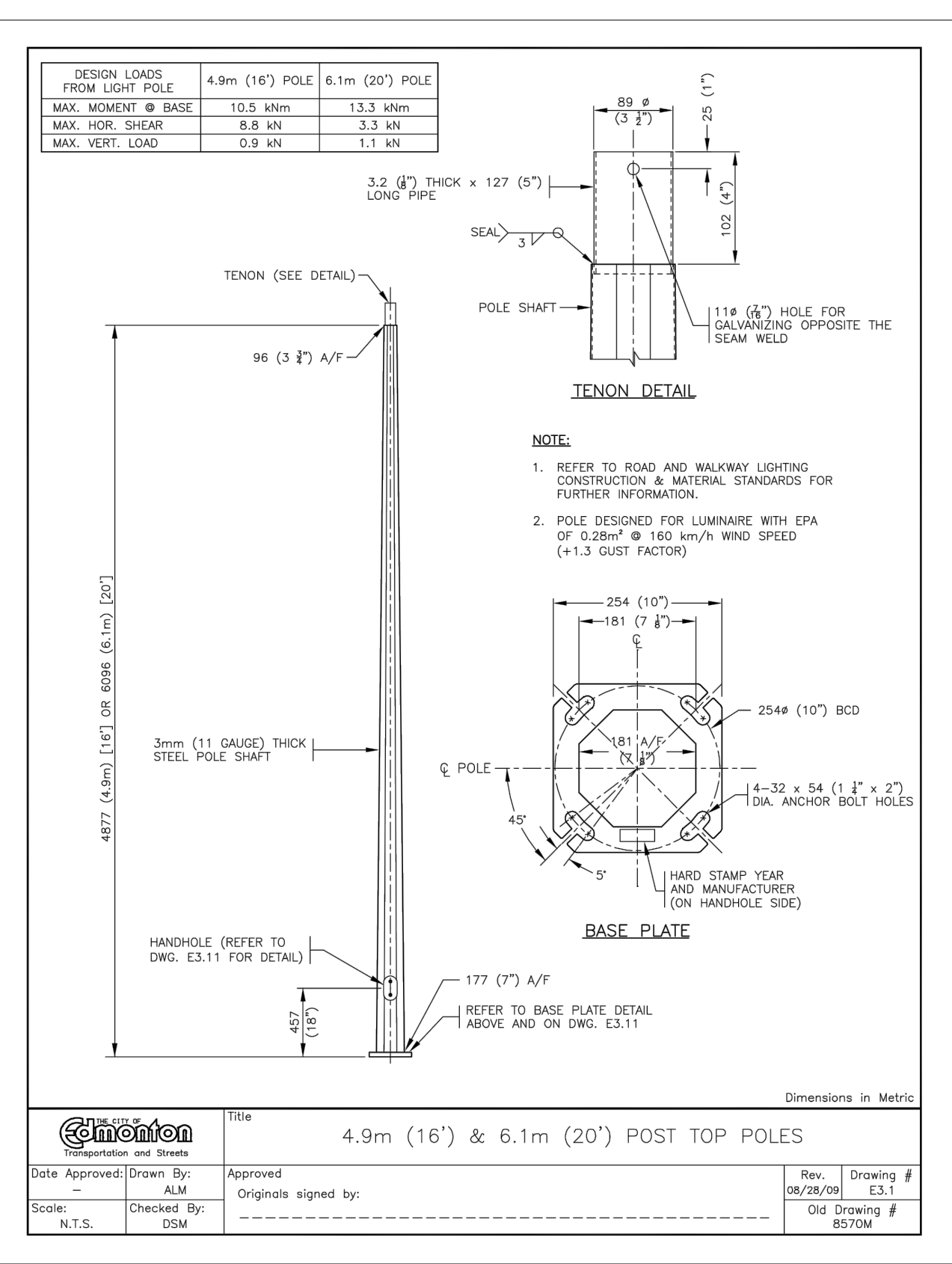
Qty	Description	Manufacturer	Model # / Type	Color / Materials	Mount
2	RRFB Pedestrian Crossing Kit (Solar)	Carmanah	Single, Black, Standard Pushbutton-Yellow, Solar, Integrated Solar Engine-Black, Overhead LED Light	Black/Yellow/Black	Pole Mounted
2	Pedestrian Sign (Right)	ATS Traffic	RA-4R	Aluminum, Black, White, 750mm x 600mm	Pole Mounted
2	Pedestrian Sign (Left)	ATS Traffic	RA-4L	Aluminum, Black, White, 750mm x 600mm	Pole Mounted
1	Right Angle Arrow Tab	ATS Traffic	1B-9-TR	Aluminum, Black, White, 300mm x 450mm	Pole Mounted
1	Left Angle Arrow Tab	ATS Traffic	1B-9-TL	Aluminum, Black, White, 300mm x 450mm	Pole Mounted
2	Pedestrians Ahead Sign (Right)	ATS Traffic	WC-2TR	Aluminum, Yellow, Black, White, 750mm x 750mm	Pole Mounted
1	Callan Pole	ATS Traffic	Type 1A	Aluminum, 5' Base, 16' Height	Concrete Pile c/w Breakaway Bolts
3	Telespar Post Square	ATS Traffic	Standard	Galvanized Steel, 1.75" width, 6' Height	Soil Anchor
1	Culvert	Armtac	800mm dia C.S.P. 16 ga. c/w Flared Ends	Corrugated Steel	Ground



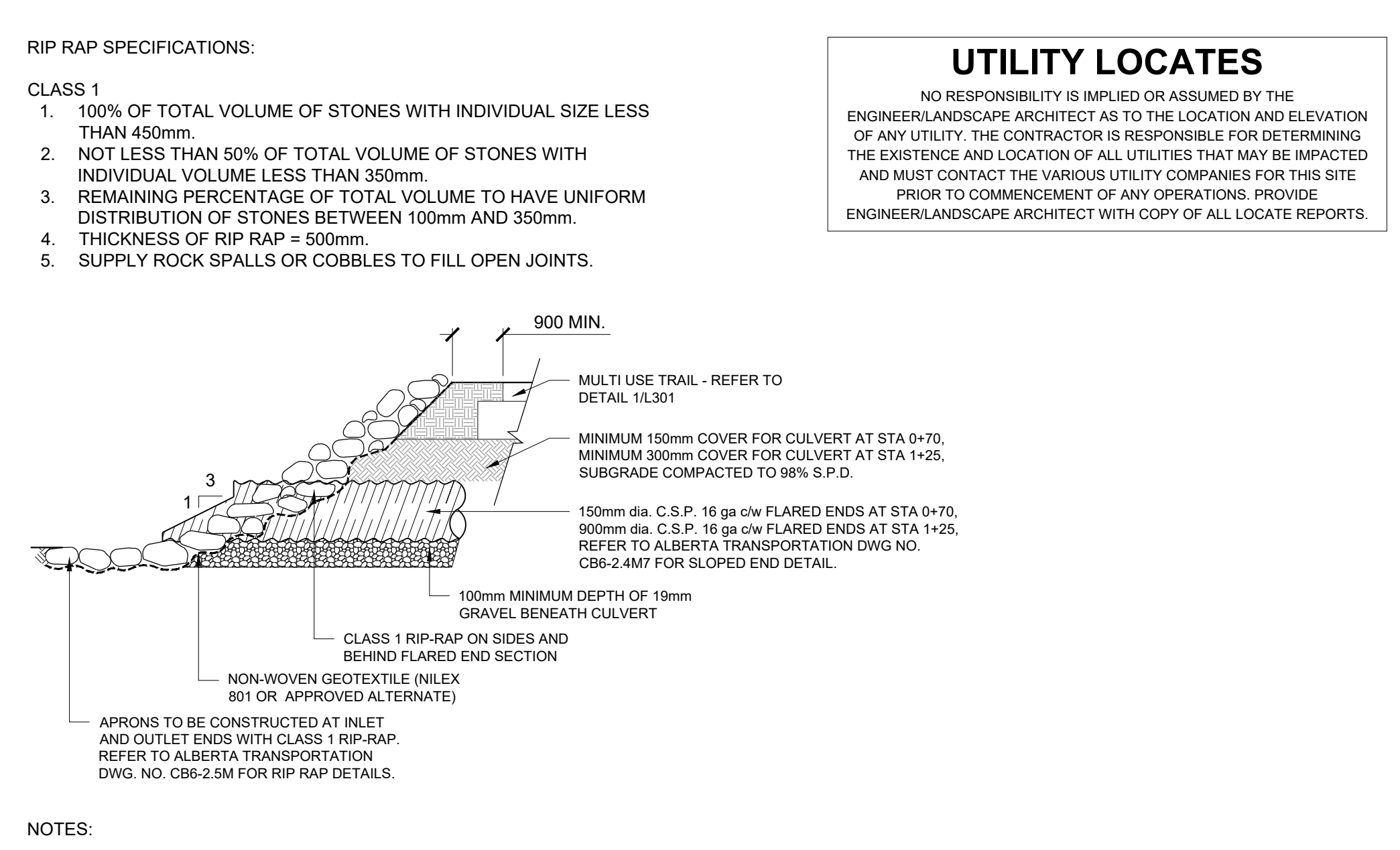
NOTES:

- ALL DIMENSIONS ARE IN MILLIMETERS.
- 32MPa CONCRETE
- B.O.W. REFERS TO BACK OF WALK.
- F.O.C. REFERS TO FRONT OF CURB.

2 CURB RAMP SCALE H 1:50



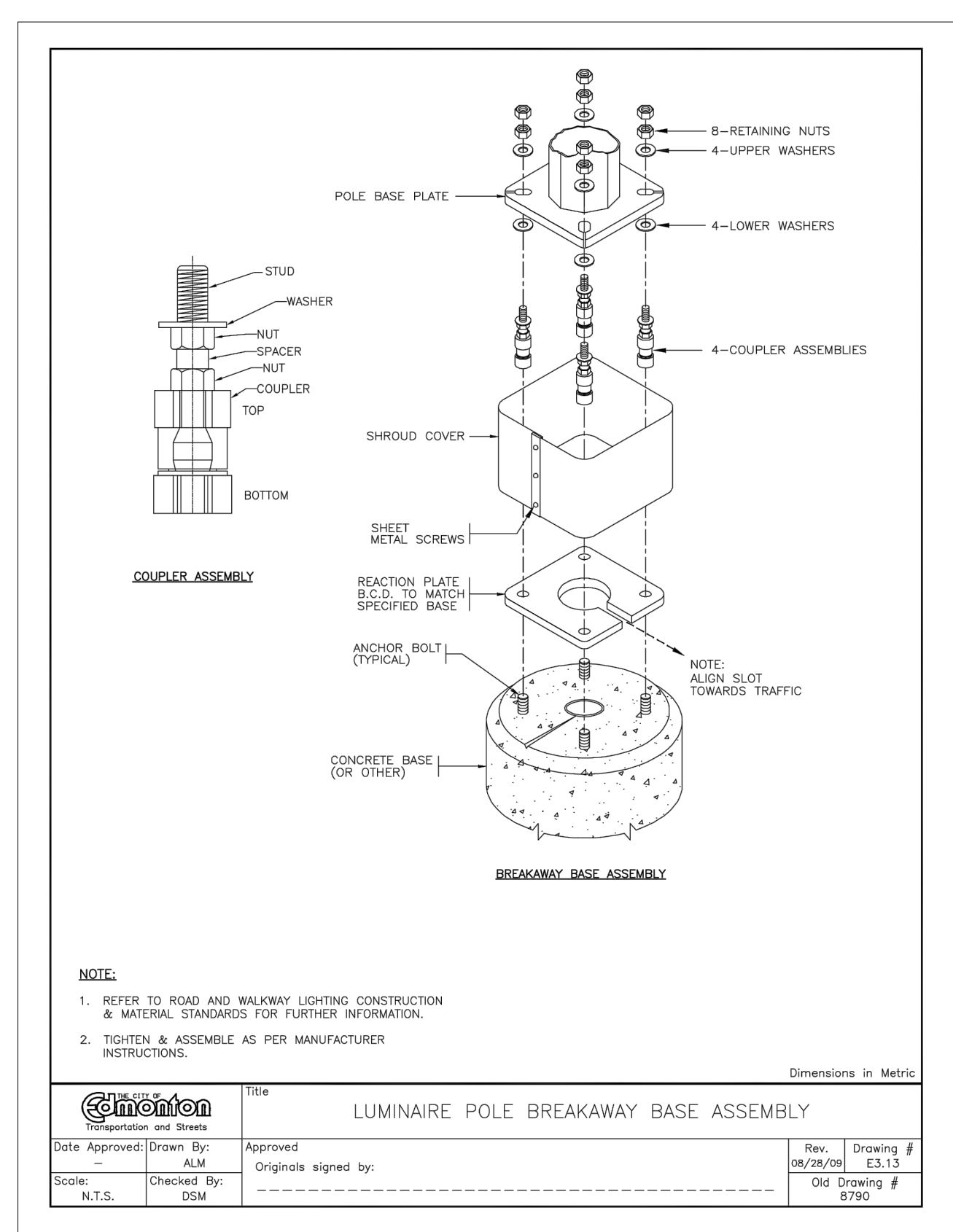
5 POST TOP POLES SCALE H 1:50



NOTES:

- ROCKS AND BOULDERS SHALL BE SELECTED AS NEARLY CUBICAL IN FORM AS PRACTICABLE.
- THE LARGER STONES BEING USED IN THE BOTTOM COURSES AND THE SMALLER STONES AT THE TOP.
- THEY SHALL BE LAID IN CLOSE CONTACT SO AS THE BREAK JOINTS AND IN SUCH MANNER THAT THE WEIGHT OF THE STONES IS CARRIED BY THE EARTH AND NOT BY THE ADJACENT STONES.

3 RIPRAP CULVERT SCALE H-NTS



5 POLE BREAKAWAY BASE ASSEMBLY SCALE H 1:50

**UTILITY LOCATES**

NO RESPONSIBILITY IS IMPLIED OR ASSUMED BY THE ENGINEER/LANDSCAPE ARCHITECT AS TO THE LOCATION AND ELEVATION OF ANY UTILITY. THE CONTRACTOR IS RESPONSIBLE FOR DETERMINING THE EXISTENCE AND LOCATION OF ALL UTILITIES THAT MAY BE IMPACTED AND MUST CONTACT THE VARIOUS UTILITY COMPANIES FOR THIS SITE PRIOR TO COMMENCEMENT OF ANY OPERATIONS. PROVIDE ENGINEER/LANDSCAPE ARCHITECT WITH COPY OF ALL LOCATE REPORTS.

RIP RAP SPECIFICATIONS:

- CLASS 1
- 100% OF TOTAL VOLUME OF STONES WITH INDIVIDUAL SIZE LESS THAN 450mm.
  - NOT LESS THAN 50% OF TOTAL VOLUME OF STONES WITH INDIVIDUAL VOLUME LESS THAN 350mm.
  - REMAINING PERCENTAGE OF TOTAL VOLUME TO HAVE UNIFORM DISTRIBUTION OF STONES BETWEEN 100mm AND 350mm.
  - THICKNESS OF RIP RAP = 500mm.
  - SUPPLY ROCK SPALLS OR COBBLES TO FILL OPEN JOINTS.

THIS DRAWING AND DESIGN IS THE PROPERTY OF MELHANEY AND SHALL NOT BE USED, REUSED OR REPRODUCED WITHOUT THE CONSENT OF MELHANEY. MELHANEY WILL NOT BE HELD RESPONSIBLE FOR THE IMPROPER OR UNAUTHORIZED USE OF THIS DRAWING AND DESIGN.

THIS DRAWING AND DESIGN HAS BEEN PREPARED FOR THE CLIENT IDENTIFIED, TO MEET THE STANDARDS AND REQUIREMENTS OF THE APPLICABLE PUBLIC AGENCIES AT THE TIME OF PREPARATION. MELHANEY, ITS EMPLOYEES, SUBCONSULTANTS AND AGENTS WILL NOT BE LIABLE FOR ANY LOSSES OR OTHER CONSEQUENCES RESULTING FROM THE USE OR RELIANCE UPON, OR ANY CHANGES MADE TO, THIS DRAWING, BY ANY THIRD PARTY, INCLUDING CONTRACTORS, SUPPLIERS, CONSULTANTS AND STAKEHOLDERS, OR THEIR EMPLOYEES OR AGENTS, WITHOUT MELHANEY'S PRIOR WRITTEN CONSENT.

INFORMATION ON EXISTING UNDERGROUND FACILITIES MAY NOT BE COMPLETE OR ACCURATE. MELHANEY, ITS EMPLOYEES AND DIRECTORS ARE NOT RESPONSIBLE NOR LIABLE FOR THE LOCATION OF ANY UNDERGROUND CONDUITS, PIPES, CABLES OR OTHER FACILITIES WHETHER SHOWN OR OMITTED FROM THIS PLAN. PRIOR TO CONSTRUCTION CONTRACTOR SHALL EXPOSE LOCATIONS OF ALL EXISTING FACILITIES BY HAND DIGGING OR HYDROVAC AND ADVISE THE ENGINEER OF POTENTIAL CONFLICTS.

ORIGINAL DWG SIZE: ANSI D (22" x 34")



Unit 201  
13455 114 Avenue NW  
Edmonton AB  
Canada T5M 2E2  
Tel 780 809 3200



**TOWN OF PEACE RIVER**  
9911 100 Street, Peace River, AB, T8S 1S4

**99 AVE WEST TRAIL DEVELOPMENT**  
Landscape Details

Drawing No.		<b>L301</b>
Project Number	Rev.	
2131-00611-05	00	