

**REQUEST FOR PROFESSIONAL ENGINEERING SERVICES**

**Town of Peace River**

**Pats Creek Storm Water Mediation Project – 2021**

**Schedules**



## TABLE OF CONTENTS

<b>1.0</b>	<b>SCHEDULE "A" – SERVICES (TERMS OF REFERENCE)</b> .....	<b>3</b>
<b>2.0</b>	<b>SCHEDULE "B" – DESCRIPTION OF THE PROJECT</b> .....	<b>6</b>
<b>3.0</b>	<b>SCHEDULE "C" - FEES</b> .....	<b>8</b>
<b>4.0</b>	<b>SCHEDULE "D" - IDEMNIFICATION</b> .....	<b>9</b>
<b>5.0</b>	<b>SCHEDULE "E" - SITE PHOTOS, DRAWINGS AND SKETCHES</b> .....	<b>10</b>
<b>6.0</b>	<b>SCHEDULE "F" – SUPPLEMENTARY DATA</b> .....	<b>11</b>



## 1.0 SCHEDULE "A" – SERVICES (TERMS OF REFERENCE)

- 1.1 Engineering Services will consist of, but not limited to the following:
- .1 Pre-Design
    - .1 Inspection and review of previous documentation and existing infrastructure; and
    - .2 Desktop site survey and analysis;
  - .2 Schematic Design
    - .1 Onsite survey as required;
    - .2 Hydrodynamic testing as required;
    - .3 Geotechnical Testing as required;
    - .4 Hydrodynamic study of the Pat's Creek Basin between the Viaduct and the headworks located in Northern Sunrise County;
    - .5 Determination of options for stormwater mitigation such as intermediate detention ponds and control weirs;
    - .6 Proposed construction staging plan for options; and
    - .7 Preparation of Construction Class C Estimates;
  - .3 Design Development
    - .1 Civil design as required to establish options and class "C" construction estimates; and
    - .2 Engineering Report detailing stormwater management/mitigation options complete with class "C" construction estimates.
- 1.2 The Consultant is responsible for noting any exclusions to the services to be provided. If there are any services that are not identified in the Request for Proposals but are essential for the successful completion of the project the Consultant is to identify them and provide a separate fee to complete.
- 1.3 Each Proposal submission must be submitted in two envelopes, clearly marked "Request for Professional Engineering Services - Pats Creek Storm Water Mediation Project – 2021"
- 1.4 Envelope 1 is to contain the written proposal submission minus the fee schedule.
- 1.5 Envelope 2 is to contain the fee schedule.
- 1.6 All proposals must be accompanied with one digital copy of submission in .pdf format.



1.7 Both envelopes to be enclosed into a larger envelope and addressed to:

The Town of Peace River  
PO Box 6600  
9911 100 Street,  
Peace River, AB  
T8S 1S4  
Attention: Mr. Jim McCuaig, P. Eng., Director of Engineering and Infrastructure

1.8 Submissions must be delivered:

- .1 Before date and time noted in the main RFP under Key Proposal Dates and Schedule; and
- .2 To the Town Office at 9911 – 100 Street, Peace River, AB

1.9 Proposals received that do not comply with the foregoing will be returned to the Consultant(s) without consideration.

1.10 The Work is defined in the Contract Documents as the “Services” and includes all labour and materials required to be supplied or provided to the Town.

1.11 A copy of the Request for Proposal Documents is attached to this Notice to Consultants.

1.12 The Consultant is responsible for ensuring that:

- .1 it is in possession of all Request for Proposal Documents, as defined in the Instructions to Consultants;
- .2 The Request for Proposal Documents have been carefully examined; and
- .3 It is satisfied as to the nature and location of the Work.

1.13 The Town reserves the right to accept or reject any and all Request for Proposal and waive irregularities and informalities at its discretion as set out in the Instructions to Consultants.

1.14 Verbal, telephone, telegram or electronically transmitted facsimile Proposals will not be accepted or acknowledged.

1.15 Calculation of fees and disbursements must be provided.

1.16 Consultant to provide hourly fee schedule to be used for additional work/engineering scope changes.



1.17 Engineering Fees proposals based upon percentage of construction will not be accepted.



## 2.0 SCHEDULE “B” – DESCRIPTION OF THE PROJECT

### 2.1 Background

- .1 The Town of Peace River receives stormwater via Pat’s Creek which is channeled into a stormwater viaduct that connects to the Peace River. The system has overloaded several times in the past due to uncontrolled flows upstream. The latest overflow of Pat’s Creek was 2020 due to a sudden thaw of a significant snowpack in the Pat’s Creek headwater area. The viaduct underwent significant repairs beginning in 2015 and continuing through 2017. The original project was funded by an ARCP grant which will provide for partial funding for this project which was approved by the Province in late 2020.
- .2 This project is to examine the Pat’s creek basin and recommend possible courses of action to reduce or eliminate the effects up to a 1 in 100 year stormwater event in the creek leading to the Pat’s Creek viaduct.
- .3 The Consultant should be aware that a River Hazard Study for the Peace River has been completed by the Province in 2020 that may provide additional information for this project. More information on the current status of this report can be found here: [Peace River flood study engagement | Alberta.ca](#) and [Peace River Hazard Study Update Notice - February 5, 2021 \(alberta.ca\)](#).

### 2.2 Project Requirements

- .1 This project is to provide professional engineering for:
  - .1 Delivery of an Authenticated Engineering Report to detail options to mitigate flows within Pat’s creek for up to 1 in 100 year events. The report will complete with Class “C” cost estimates for the submitted options.

### 2.3 Project Scope

- .1 The successful consultant will review existing reports, meet with Town staff as required, and review the site area to confirm the existing conditions in the Pat’s Creek area of study.
- .2 Although the Pats Creek headworks is located in Northern Sunrise County, the County is not obligated by any finding in the final report. The Town will make a copy of the final report available to Northern Sunrise County for information.
- .3 The Consultant will complete a hydrodynamic study of the Pat’s Creek basin to establish/confirm the 1 in 20, 50 and 100 year flows for Pat’s Creek as it enters into



TOWN OF  
**PEACE RIVER**  
ALBERTA

the stormwater viaduct in Peace River.

- .4 The Consultant will be prepare an engineering report authenticated by a Professional Engineer registered in the Province of Alberta, describing the expected flows and respective inundation, options available to the Town and the County to mitigate the flows with Pat's Creek, along with construction estimates on the proposed options.



### 3.0 SCHEDULE "C" - FEES

#### 3.1 Fees

.1 Fees below are to be submitted for the work described in Schedule "B".

(Attach Successful Consultant's Proposal)

(FOR TOWN USE ONLY)





#### 4.0 SCHEDULE "D" - IDEMNIFICATION

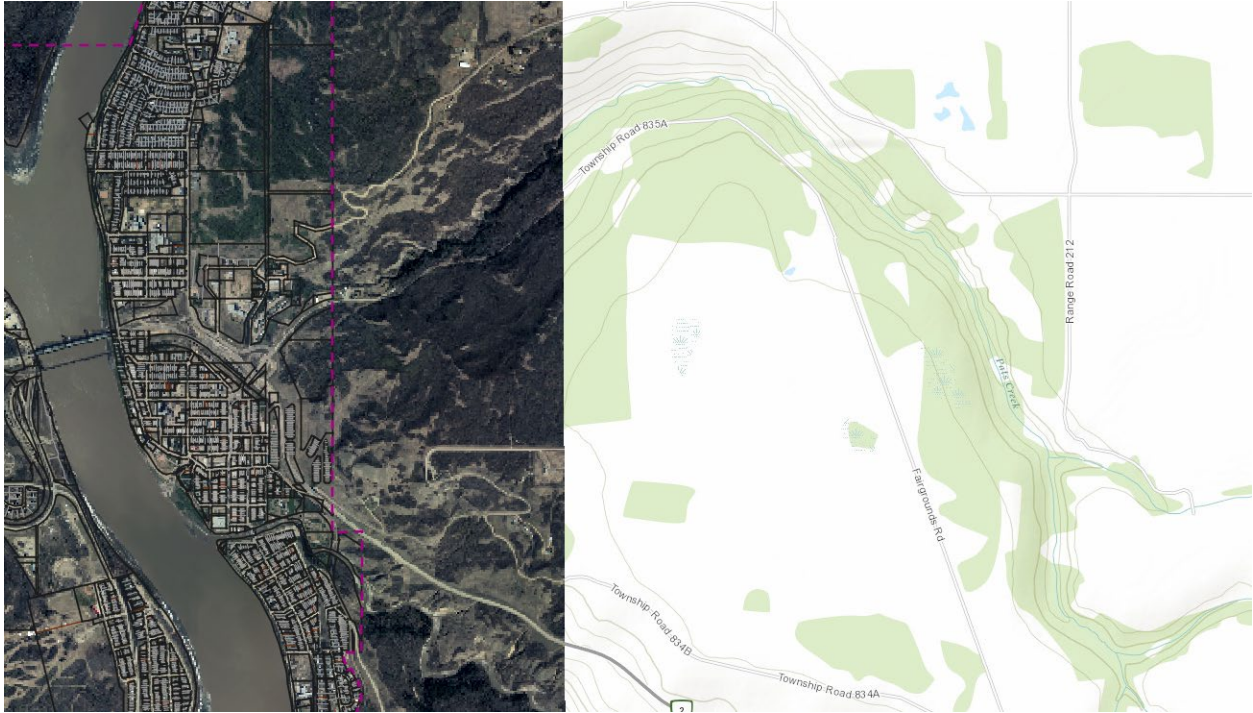
4.1 The following are a list of Consultants, Agents and Town Representatives to be indemnified by the Selected Consultant:

- .1 Town of Peace River Staff, and members of the Town Council.



**5.0 SCHEDULE "E" - SITE PHOTOS, DRAWINGS AND SKETCHES**

Pat's Creek Area of Study



Pat's Creek Viaduct Entrance





## 6.0 SCHEDULE "F" – SUPPLEMENTARY DATA

- 6.1 Pat's Creek Culvert Assessment - 2005
- 6.2 Stormwater Management Report – Focus Engineering - 2009