



# 12 FOOT DAVIS EVENTS PARK DESIGN CONCEPT

---

## FINAL REPORT

Prepared by the Mackenzie Municipal Services Agency

For the Town of Peace River



December 2013



## Table of Contents

Overview .....	1
Preliminary Design Concepts .....	1
Community Feedback .....	3
Consultation Process.....	3
Stakeholders .....	3
Community.....	4
Consultation Recommendation .....	7
Final Design Concept.....	8
Design.....	8
Known Constraints .....	16
Phasing and Tentative Budgets.....	17
Summary .....	21
Appendix A – Design	
Appendix B – Design Element Quotes	

## OVERVIEW

In April 2013 Mackenzie Municipal Services Agency was directed by the Town of Peace River to begin a park design process. Following an inaugural project meeting on April 17, 2013 with Town of Peace River staff, where town staff provided preliminary ideas and background information, MMSA began working to develop design concepts for enhancements to the 12 Foot Davis Events Park. MMSA staff conducted a number of site visits, diagrammed key ideas and developed initial rough designs. Town staff provided early feedback on these concepts after which MMSA staff finalized these initial design concepts. The initial design concepts, outlined below, were presented to Peace River Town Council in May 2013.

## PRELIMINARY DESIGN CONCEPTS

The 12 Foot Davis Events Park design options aimed to facilitate the continued use of this space for large community events while also enabling smaller community and private events, as well as informal day-to-day use. There were three initial 12 Foot Davis Events Park design concepts, in order to explore a range of alternatives:

- Formalizing the Existing Pattern
- Rethinking the Pattern
- Centering the Stage

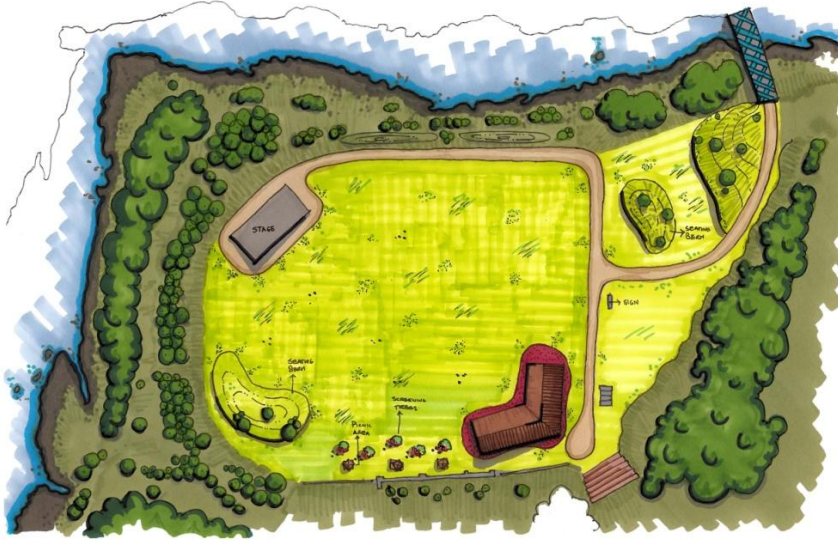
The initial design concepts shared a number of key features based on the requirements described by the Town staff. The key features included:

- A pavilion structure, large enough to house a 200 person event.
- A stage, permanent or temporary structure, large enough to accommodate PeaceFest.
- A perimeter road for events-based vehicular traffic to limit damage to the field.
- A new bathroom, to meet the needs of small and medium-sized events.
- Removing the baseball fence and shale.
- Adding a berm along the western edge of the field, to shore up the bank along the river.

Further design ideas emerged, including:

- Enhancing the park entrance.
- Refurbishing the existing bleachers.
- Creating formal and natural seating areas.
- Enhancing the concrete wall along the eastern edge of the park.
- Enhancing access to the Heart River.
- Installing further seating berms.
- Pedestrian paths throughout the park space.

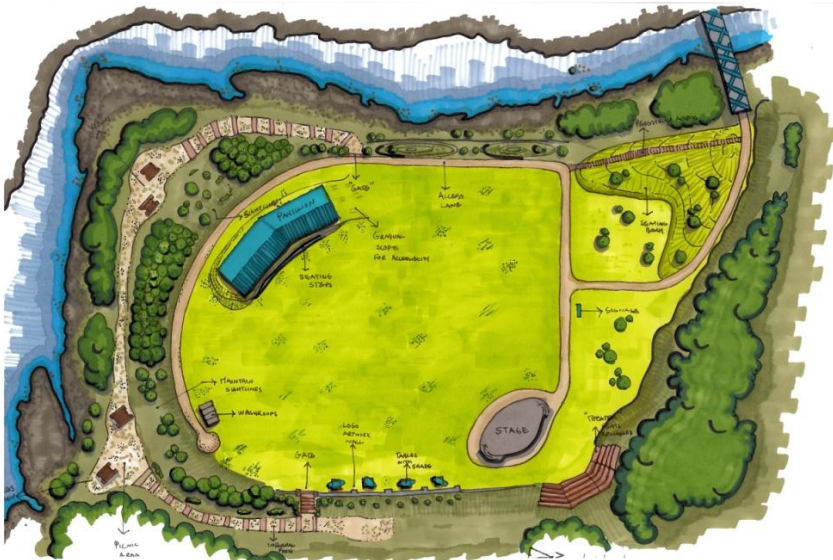
The three initial design concepts manipulated the location of the key park elements, which impact the flow of activity in the park.



### Design Concept 1:

#### Formalizing the Existing Pattern

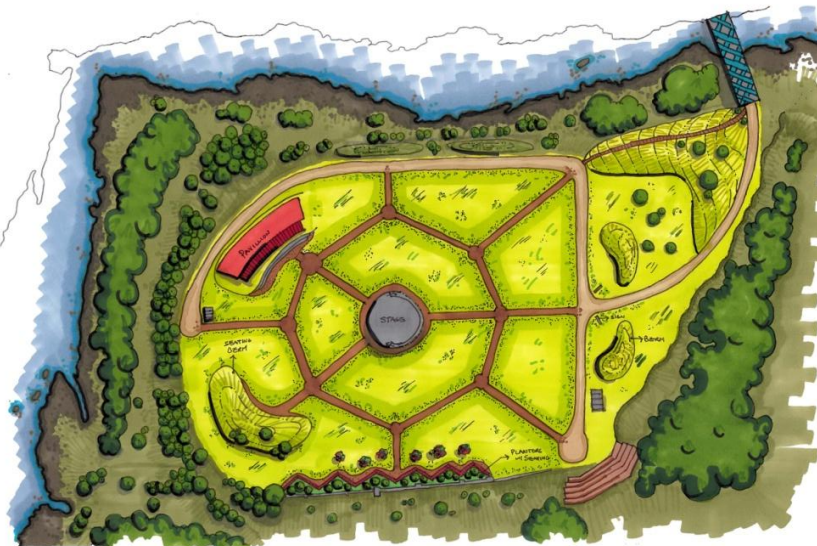
This concept most closely emulates the current activity patterns in the park during the PeaceFest event.



### Design Concept 2:

#### Rethinking the Pattern

This concept flips the stage location to the northeast corner of the park, creating the possibility that the existing bleachers could be used as seating for the stage area for smaller events.



### Design Concept 3:

#### Centering the Stage

This concept separates the park into quadrants that contain activities and encourage concurrent multiple uses.



## COMMUNITY FEEDBACK

### Consultation Process

Following the presentation of the initial design concepts to Council on May 27, 2013, staff were directed to engage in a community consultation process. Consultation took place throughout July 2013 and presented the initial design concepts to the community for feedback. Information boards outlined the design concepts and design process. Design concept information was available on the town website and at key public locations in the community. A community survey, available both online and in hardcopy, was developed to obtain community feedback. Two open houses were held, in conjunction with community events, to provide the community with information on the design concepts and encourage feedback. The consultation process was publicized with advertisements in the Record Gazette, on YL Country and KIX FM, at the Peace River movie theater, and on the Town's social media. Letters were sent to key stakeholders for each park site, informing them of the process and initial design concepts.

The results of the consultation process were presented in a Consultation Report to Town Council in August 2013. The feedback received on the 12 Foot Davis Events Park design concepts was summarized in the Consultation Report and is also included below.

### Stakeholders

#### **FMSYSTEMS, Blair McEwen (PeaceFest stage contractor)**

- 'Formalizing the Existing Pattern' is the recommended stage location because:
  - The location in 'Rethinking the Pattern' may result in low level speaker/base vibrations destabilizing the hillside.
  - The 'Centering the Stage' location will make it difficult to provide adequate locations for sound people and band managers, and musicians, pre-show.
- Purchasing a movable stage is good option.

#### **Alberta Environment and Sustainable Resource Development, Terry Sawchuk**

- The Park is on the banks, and within the floodplain, of the Heart River and is definitely susceptible to periodic flooding and bank degradation due to natural river hydrologic processes.
- Permanent structures such as the stage, pavilion and washroom facilities should be flood proofed by:
  - Site grading and building placement to encourage drainage away from structures and back to the river.
  - Use of building materials that are resistant to water damage wherever possible, particularly for foundations and ground level developments
  - Building designs that incorporate flood protection principles such as elevated floors and raised electrical boxes and outlets.
- Picnic benches, tables and garbage receptacles should be constructed of heavy water resistant material such as concrete and be fixed in place.

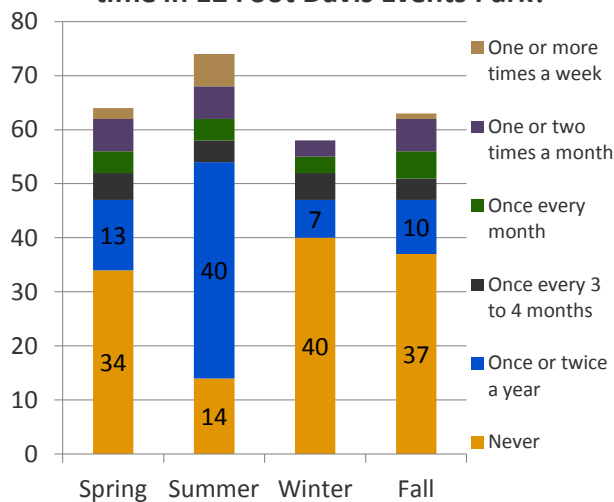
- Disturbance to the natural vegetation along the river should be minimized wherever possible to maintain a buffer and discourage bank erosion. The buffer zone also acts as a trap to catch drift and silt during high flow events.

#### Alberta Environment and Sustainable Resource Development, Jeff Poeckens

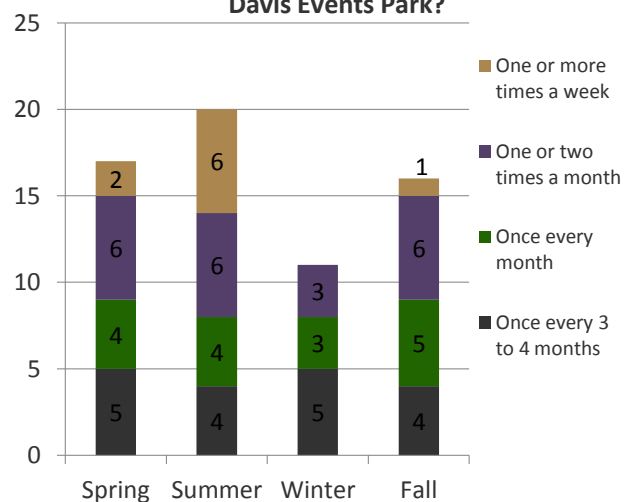
- No concerns with design concepts.
- A Temporary Field Authorization would be required to permit the changes on crown land within REC 138 if the land sale does not go through prior to one of these concepts being constructed.
  - The Town of Peace River has submitted a proposal to purchase the crown lands covered under Recreation Lease REC 138 which covers a portion of the mentioned 12 Foot Davis Park.

#### Community

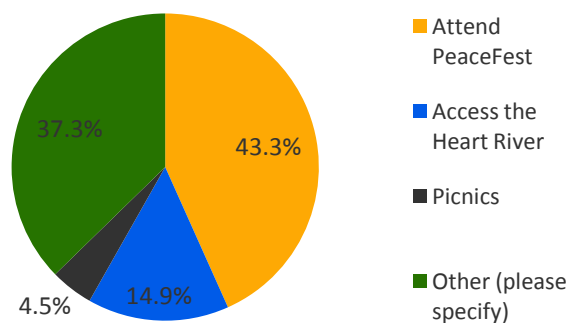
**Figure 5. How often do you spend time in 12 Foot Davis Events Park?**



**Figure 6. Frequent Park Users: How often do you spend time in 12 Foot Davis Events Park?**



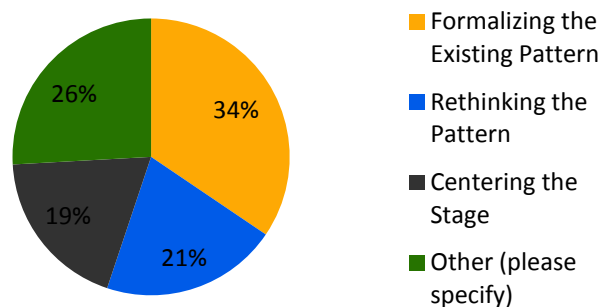
**Figure 7. What do you do while in 12 Foot Davis Events Park?**



- Current Uses
  - Summer months gets the largest number of visitors followed by Spring/Fall, both in terms of infrequent and frequent users (Figures 5 & 6).
    - PeaceFest likely draws the majority of the people who use the park once or twice in the summer.
    - There is a constituency of users who use the park on a more regular basis for the majority of the year.
  - Access to the Heart River is also part of the park's draw (Figure 7).
  - Picnicking is currently not a very strong use.
    - This could be due to lack of appropriate facilities, as it is mentioned as a desired use.
  - Recreational walking and dog walking are highlighted by survey respondents as another frequent use (Figure 7).
- Desired Uses
  - Camping
  - Walking/jogging, Cross Country Skiing, Baseball, Ultimate Frisbee
  - Picnic area with BBQ and/ or fire pits
  - Special events such as weddings, reunions, a community market
  - Connect it to the entire parks and trail system
  - Increased programming in park
  - Playground
- In addition to specific feedback on the design concept components, additional themes emerged from the survey responses.
  - Flooding
    - Need to ensure that town investments are resilient to flooding.
    - Need to preserve the area as a natural flood plain that limits flooding downstream in the built area of town.
    - Need to address deteriorating bank of the Heart River to ensure the park remains a viable community space.
  - Project cost
  - No need to change the park
  - Return to baseball diamond
- Design Concept Feedback
  - Popular design components
    - Renewed bathrooms
    - Improved access to the river
    - Seating berms
    - Covered seating (pavilion)
    - Improved access for event setup
    - Shade
    - Picnic facilities

- Walking paths
- 'Formalizing the Existing Pattern'
  - Positive feedback
    - Simplicity of the design
    - Familiar layout, that works for PeaceFest
  - Concerns
    - Will the berm along the Heart River increase flooding in the Town?
- 'Rethinking the Pattern'
  - Positive Feedback
    - Raised pavilion
    - Renewed bleachers
    - Access to the river and picnic areas
    - Hill-side seating and berm at the entrance.
  - Concerns:
    - Potential increase in noise impacting park neighbours.
    - Need for accessible walking paths and lighting to enable year-round use.
- 'Centering the Stage'
  - Positive Feedback
    - Planters/seats and berms.
    - A reduced number of quadrants/paths.
    - Increased opportunity for walking and jogging.
  - Concerns
    - Most controversial design in terms of stage location and walking paths.
- The feedback on the concept of a stage and its potential location provided less clear direction (Figure 8).
  - The twenty-six percent of respondents who responded 'Other' likely were those who are not in favour of a stage structure.

**Figure 8. What is your preferred stage location?**



### Consultation Recommendation

Overall, feedback for the 12 Foot Davis Events Park design concepts was positive. Therefore, the Consultation Report recommended that a final design concept be developed with the following elements:

- Stage location
- Event pavilion
- Seating berms
- Removal of baseball elements
- Entrance enhancements
- Refurbished bleachers
- Enhanced river access
- New bathroom
- Enhanced concrete wall with planter, seating
- Perimeter road
- Picnic areas
- Increased natural shade areas along the perimeter
- Provisions for dog walkers

Investing too much into the “events” aspect of this park seems to be somewhat controversial, with some community members arguing that the number of events currently in the park is insufficient to merit the investment. Therefore, there may be value in having a temporary or a movable stage rather than a permanent structure.

If a permanent stage is the desired direction, moving forward requires further stage-specific design, and possibly geotechnical work by a specialized contractor(s). However, the final design of the stage does not prevent implementation of the majority of the design components. As the initial investments are made and the park becomes more used and loved by the community, there could be increased justification for major investments.

If, however, a temporary stage is an option, the town would be able to use the movable stage in other locations and possibly use it as a revenue generation opportunities by renting it out to surrounding communities.

## FINAL DESIGN CONCEPT

### Design

The final design concept for 12 Foot Davis Events Park combines the most popular aspects of the three initial design concepts. The key difference between the initial designs and the final design concept is that the final design moves away the baseball diamond shape, which constrained the first design concepts, working instead with the natural shape of the park. The design responds to environmental concerns by placing the major fixed design element farther from the river. The recommended bathroom is a flood-resilient design. Similarly, the simplicity of the pavilion structure, as well as its placement in the northeast corner of the park maximizes its resilience to a potential flood event. The berm along the river will discourage activity near the slumping river bank.



The park is designed to allow for a range of activities and events, ranging from every day, individual use to large scale public events. The central field area is large enough to allow for informal games of soccer and Frisbee. The smaller areas are conducive to activities that require less space, such as 'yoga in the park'. The addition of a pavilion, which provides a large area of shade and shelter from the weather, will increase the park's usefulness for community groups, including the Summer Fun program.

The park may also serve as a venue for private events, such as weddings and reunions. The new bathroom can serve these events. A storage room will allow the Town to store tables and chairs on site. Access to the Heart River is improved, with arbours defining access to the perimeter of the park on both the east and west. Picnic tables along the southern perimeter of the park provide space for a semi-private and cozy picnic, with good views to the Heart River. A range of informal seating throughout the



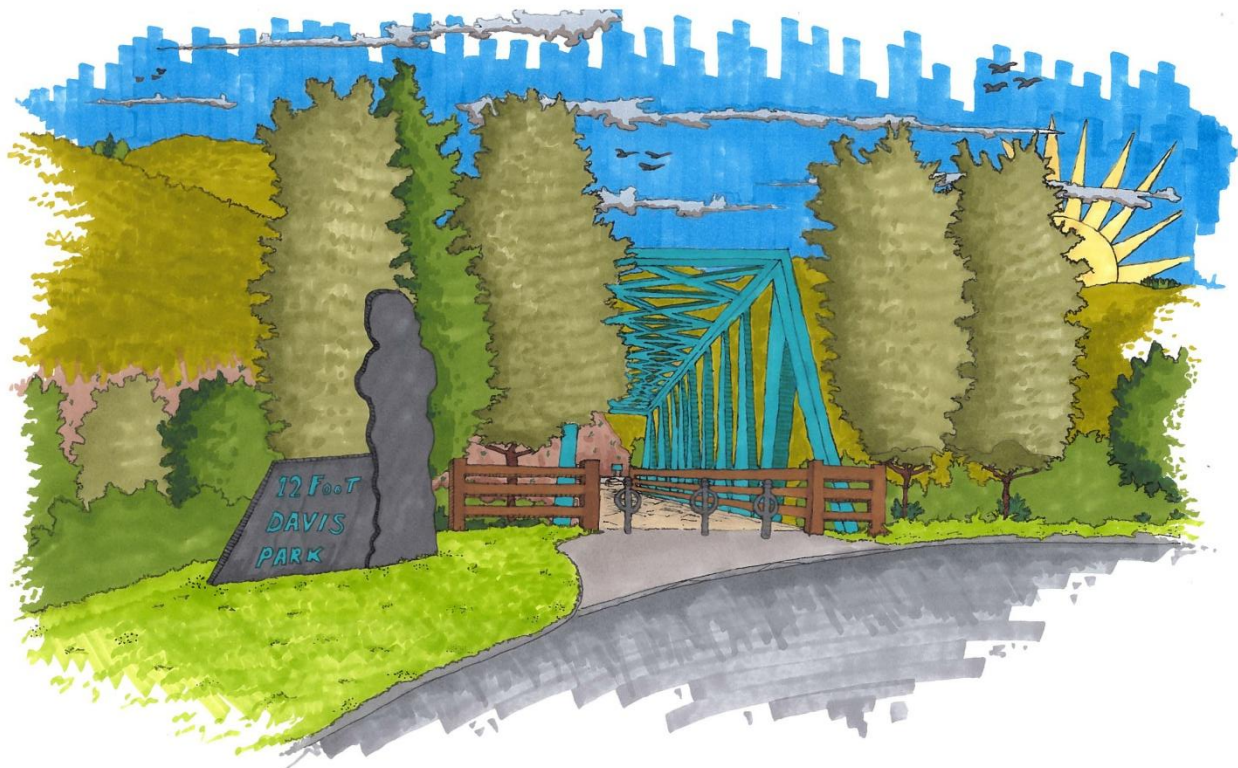
park will give people the opportunity to relax and stay in the park space. Added landscaping will provide shade throughout the park space, making it a pleasant place to be in hot weather. The landscaping will also provide greater colour and texture.

#### Entrance:



Removing the fence that currently crosses the park entrance will create a more inviting entry to the park space for everyday users. Vehicular access to the park continues to be restricted through the use of bollards, which double as bicycle parking. The bollards will be removable, to allow for controlled vehicular access as required for park maintenance and special events.

A park sign highlights the entrance to the 12 Foot Davis Events Park. A new park sign will echo the lines of the pedestrian bridge crossing the Heart River, visually linking it to the bridge. A 12 Foot Davis profile, which previously was a component of the Town welcome sign, will emphasize the park brand, while painting the profile black will modernize the image and visually connect the sign to the railway bridge in the distance and the steel beams of the pavilion in the park.



### Pedestrian Paths:



After crossing the bridge into the park, a pedestrian path leads down the hill into the main park area. The hill is built out, to provide a gentle and more direct slope into the park space.

A reduced (compared to the Centering the Stage design concept) number of shale or crushed gravel pathways within the park provide structure to the space and create smaller activity nodes while maintaining a large central space. The pedestrian pathways are 3 metres wide, providing enough space for two individuals with limited mobility to pass each other comfortably. These pathways will focus walking activity in the park, while maintaining the central area for other activities. The path leads from the park entrance, to the pavilion, the stage area and the eastern harbour. These pathways will help encourage better circulation of people in the site during major events, as they can act as aisles.

Tree plantings border the pedestrian pathway, staggered on the both sides, which frames the path and brings shade, texture and colour into the main park area.



### **Park Information Sign:**

A park information sign will greet park users after they cross bridge, on the top of the berm, where the pedestrian path meets the main vehicular access road. This board will have details about the history of the park space and the location, design features of the park and rules and regulations of the park.

### **Perimeter Road and Stage Area:**

A 5 metre wide perimeter road leads from the park entrance, along the western edge of the park to the stage area. The stage area is large enough to allow a vehicle to manoeuvre around the stage, facilitating set up for major events. The road could be either gravel or permeable pavers, which would limit the visual impact of the road in the park space, while maintaining the functionality of the road.

The stage area is in the south west corner of the park, closely mimicking the current PeaceFest set up. The final design concept works with either a temporary or permanent stage structure.

### **Central Activity Area:**

The central activity area is 51 metres (167 feet) long and has a width of 65 metres (213 feet) at its widest point for a total area of approximately 2828 m<sup>2</sup> (30440 square feet), ensuring that the park space remains flexible and useable for larger events and gatherings.

### **Berms:**

Five berms add additional structure to the park space. Firstly, a large berm at the entrance creates a gentle slope for a direct pedestrian path into the space. This separates pedestrian and vehicle flows into the park. This berm also creates a cozy, informal seating space in the hollow of the hill, with raised, unobstructed views of the park and the railway bridge. Secondly, two small berms create additional informal seating, with views towards the central area.

A large berm, approximately 812 m<sup>2</sup> in size, in the north east corner of the park provides a raised platform for the event pavilion and from it, views to the stage area. Three large concrete steps along the south edge of this berm provide formal access into the pavilion and another type of informal seating. The gentle slopes towards the east and west edges of the berms ensure that the pavilion area is accessible to all. Finally, a berm along the western edge of the park, between the road and the park edge protects the edge from further degradation of the park into the Heart River, while allowing for landscaping opportunities.

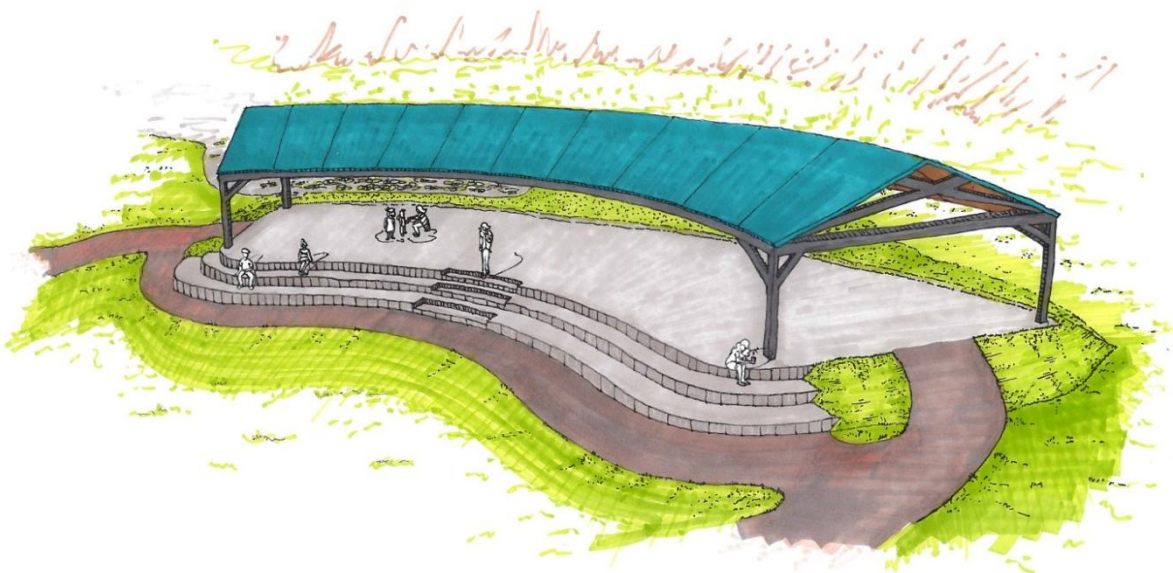
## Pavilion:



The recommended pavilion is a black post and beam steel structure with a teal green steel roof. The cross buck beams reference rail bridges, which in combination with the finish colours will visually connect the pavilion to both the railway bridge to the south east and pedestrian bridge into the park. The pavilion has a custom, curved design, which works with the natural shape of the park space. The pavilion is 332.13m<sup>2</sup> (3575.02 square feet) under roof, which will provide a large and flexible space for community and private events, including weddings and family reunions. The ceiling of the pavilion is a tongue and groove wood, which adds warmth to the space.

The pavilion rests on a large berm, with a concrete floor. On the west, east and north sides of the berm the ground gently slopes away from the pavilion. Three oversized concrete steps provide access to the southern end of the pavilion, providing seating, which faces directly into the central area of the park. Directly in the center of the seating steps, smaller, walking steps provide access up to the pavilion. The topmost step continues into the floor of the pavilion. Currently, there is power to this area of the park, and it is recommended that this power continue, allowing for the provision of lighting in the pavilion.

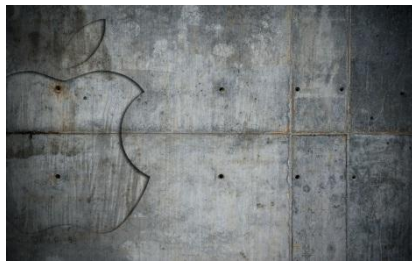
The pavilion is open on all four sides, limiting the visual dominance of the structure in the park space, despite its size. However, wind screen fabric that can be used to ensure that the pavilion is a usable space even on windy days.



### East Wall:

The east wall is approximately 41 metres long and comprised of cement blocks that stabilize the hillside. These blocks are a canvas to add a graphic feature to the park. The back of the wall will be painted black and a grey silhouette of 12 Foot Davis will be painted over top, to further emphasize the park brand in a contemporary way.

A curving concrete planter will run the length of the retaining wall, its width ranging from 1 to 4 metres from the wall. A variety of trees and shrubs will be planted, bringing more texture and colour into the park space. The park's irrigation system could potentially be repurposed to provide irrigation to the planter, supporting the vitality of the plants.



Source : <http://good-wallpapers.com/computers/16052>

The edge of the planter will be 0.45 metres wide, enough to provide a comfortable seating area. A low back would provide additional support, providing formal seating in the park space. The concave portions of the planter edge will provide spaces for groups of people to sit together, while the convex portions of the planter will provide a more solitary seating experience. Text reliefs will be stamped into the front face of the planter, providing an additional contemporary and subtle art feature, which could highlight the history of the park, the community or 12 Foot Davis.



### Natural Path and Arbors:



Access to the Heart River is a valued feature of the park. Two arbours will frame the main eastern and western access to the perimeter of the park, where there are unique views of the rail bridge and access down to the river. The existing path along the perimeter of the park will be groomed to facilitate use but left in a natural state. Picnic tables will provide a space for a private picnic with views to the Heart River. At the eastern access, steps will provide ease of access to the elevated trail.

### Bleachers:



The bleachers, which served as spectator seating for baseball games, will be refurbished to provide additional seating in the park space. They will provide an elevated view into the park and take advantage of an existing resource, while honouring the parks past as baseball diamond.

### Washroom and Storage Space:

A new two-stall washroom with water and power, will serve park needs for small to medium-sized events. The building will also house a storage room, which will enable the Town to store tables and chairs on-site to serve events.



## PeaceFest:

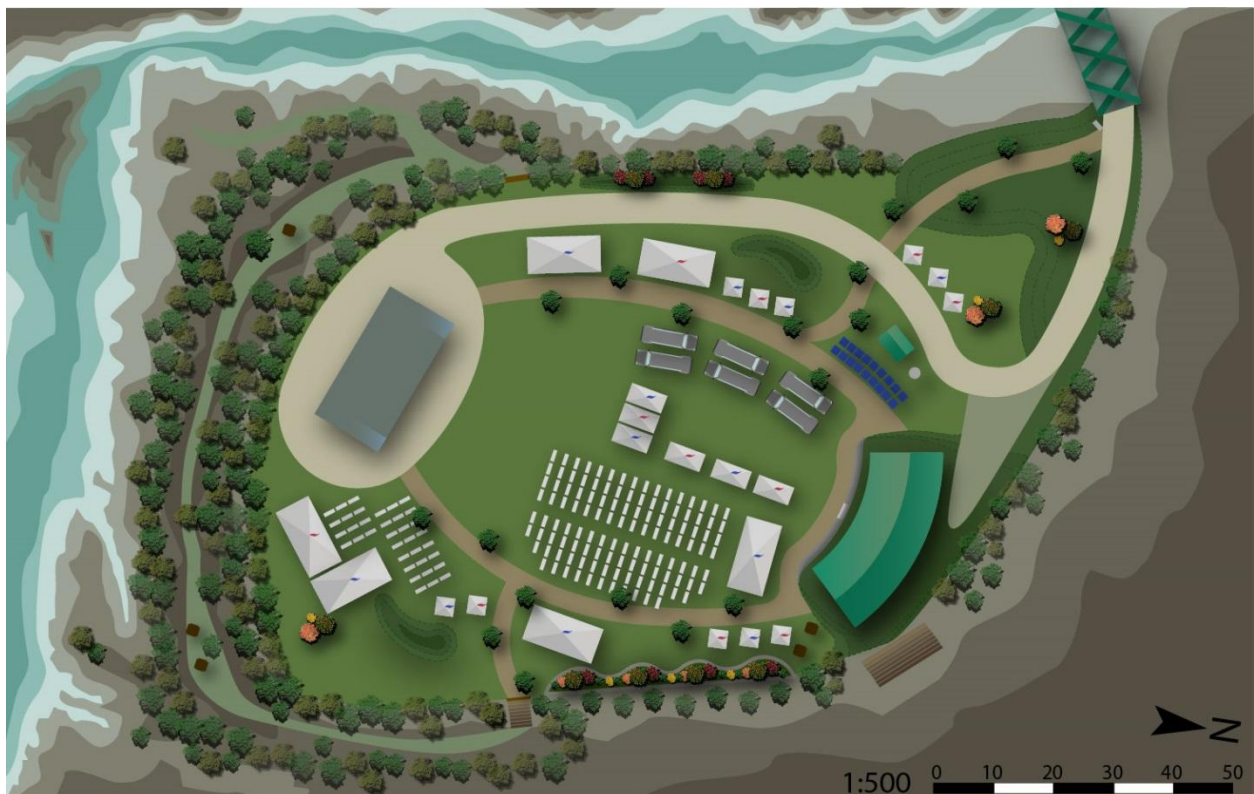


Source: PeaceFest Facebook Cover Photos

As shown below, the major components of the PeaceFest setup can be accommodated in the final park design with some alterations to the event set up. The location of the stage area in the final park design closely mimics the current PeaceFest event set up. The stage area provides enough space for a vehicle to maneuver around the stage once it is set up and will also provide the space - to the back and sides - and the privacy required for performer hospitality during the event.

The pedestrian paths can act as aisles to focus movement through the event space, while vendors and event services can be placed adjacent to the aisles. The pavilion will offer a raised view towards the stage area and could serve as a location for drink sales. The trees adjacent to the pedestrian path will provide shade for both vendors and attendees.

The pedestrian paths can act as aisles to focus movement through the event space, while



## Known Constraints

### Bridge:



The bridge across the Heart River into the 12 Foot Davis Events Park constrains the loads that can be brought onto the site. Currently, the load limit is 2.5 ton. Repairs to the bridge structure would bring the load capacity up to 10.4 ton. A bridge inspection report provided to the town from MOST Engineering in 2013 provides repair recommendations. Given the current load limitations of the bridge, repairs to the bridge are key to enabling the implementation of the design concept. It is expected that bridge repairs will cost approximately \$32,000.

### Land Slumping:



In 2009, a Preliminary Geotechnical Assessment of the bank instability at the park was completed for the Town of Peace River by AMEC. The assessment identified instability and movement in the riverbank slope adjacent to the Heart River channel due to two likely factors: on-going river erosion and drawdown effects of the river following periods of peak water levels. The assessment identified a range of possible remedial options.

### **Phasing and Tentative Budgets**

Implementing the full 12 Foot Davis Park design concept would require a capital budget of close to \$1,000,000. However, the design concept can be broken out into a number of manageable phases, each of which will progressively increase the park's utility and aesthetic value. It is recommended that the design implementation progress at a pace of one phase per year for a total implementation of three to four years.

Tentative budgets are provided below, to give a scope of cost for each of the phases. These estimates aim to cost the key park components but do not include all labour costs. It is also important to note that these labour costs will vary depending on the extent to which the park design can be implemented by the Town's Public Works department, or through the use of private contractors. In addition, further engineering work will be required before the base of the pavilion can be constructed.

Overall, the park design includes a number of big ticket items, namely the pavilion, bathroom and stage. However, the majority of the design elements have a considerably smaller price tag. Given this, the implementation of the park design is recommended to proceed in four phases.

#### **Phase 1 – Planter, Paths, and Landscaping**

Phase one focuses on completing the major changes to the physical structure of the park, and includes the major park components that involve moving earth, adding gravel and pouring concrete. The concrete work may include the preparation of footings for a future pavilion.

In addition, this phase also includes installing the bollards at the entrance of the park, which is an essential step in communicating that the 12 Foot Davis Events Park is open for general community use.

**Table 1. Phase 1 Capital Costs**

Design Component	Number	Cost per Unit	Estimated Total Cost	Budget Estimate Supplied by	Notes
Heart River Bridge Repair			\$32,000	Town of Peace River	
Concrete planter	28 loads	\$230.00	\$6,440.00	Town of Peace River	Concrete, rebar and forms. Type 30, 50mpa concrete.
Trees and shrubs	35	\$150.00 to \$250.00	\$8,750.00	Canadian Tire/Fern's Greenhouse	18 trees along the pedestrian pathway; 3 ornamental groups of 3 trees and shrubs; 8 in planter along east wall Types of Trees: Amur Maples, Green Ash, Columnar Aspen, American Elm
Soil	30 to 40 loads of topsoil	\$120.00	\$4,800.00	Town of Peace River	Additional loads of soil will be required but costs associated primarily with top soil.
Paint		\$500.00	\$500.00	Town of Peace River	Concrete paint and primer
Bollards/Bike racks	4	\$397.00	\$2,776.20	Reliance Foundry Co Ltd	See Appendix B for quote.
Perimeter road <i>Preferred Option</i> <i>Permeable Pavers</i>	2,278m <sup>2</sup>	\$25.80/m <sup>2</sup> + <i>excavation and infill costs</i>	\$58,772.40	Unilock or Terraform Enterprises	Vehicle access lane is 5 m wide, total vehicular area of 2,278 m <sup>2</sup> Terraform – e40 ecogrid model
<i>Secondary Option</i> <i>Gravel</i>		\$40.57/m <sup>2</sup>	\$92,421.71*	Town of Peace River	
Pedestrian path <i>Preferred option</i> <i>Red Shale</i>	254m in length		\$59,797.62*	Town of Peace River	Pedestrian paths are 3 m wide and 762m <sup>2</sup>
<i>Secondary option</i> <i>Gravel Crush</i>		\$112.00/m (3 m wide)	\$28,448.00	Town of Peace River	
<b>PHASE 1 TOTAL</b>			<b>\$207,485.53</b>		<i>*used in total calculation</i>



### Phase 2 – Day-to Day Utility

Phase 2 focuses on adding the ‘quick win’ design elements that will add to the day-to-day usability of the park space at a minimal cost.

**Table 2. Phase 2 Capital Costs**

<b>Design Component</b>	<b>Number</b>	<b>Cost per Unit</b>	<b>Estimated Total Cost</b>	<b>Budget Estimate Supplied by</b>	<b>Notes</b>
Entrance Sign	1	\$6,000.00	\$6,000.00	Town of Peace River	Using the old 12 Foot Davis Profile Figure
Information Sign	1	\$2,000.00	\$2,000.00	Town of Peace River	
Dog walking waste bag dispenser	1	\$200.00	\$200.00	Practica	
Picnic Tables	4	\$986.00 + Freight and GST	\$3944.00 + Freight and GST	Blue Imp	Pedestal Picnic Tables See Appendix B for quotes.
Refurbishing Bleachers			\$1,000.00	Town of Peace River	
Waste Bins	2	\$1,100.00	\$2,200.00	Canadian Recreation Solutions	Animal Proof
Pergolas	2	\$2,000.00	\$4,000.00	Home Hardware	
<b>PHASE 2 TOTAL</b>			<b>\$19,344.00</b>		

### Phase 3 – Pavilion and Bathroom

Phase 3 of implementation adds the pavilion and bathroom, which will make the park a preferred venue for a variety of small and medium-size events. In addition, the tables and chairs, which could serve those events, are included in the budget. This phase includes the most expensive design elements. The numbers quoted below represent high end design choices. It may be possible to make design compromises that would lower the cost. Alternatively, this phase could be further sub-divided to lower the impact on any one budget year.

**Table 3. Phase 3 Capital Costs**

Design Component	Number	Cost per Unit	Estimated Total Cost	Budget Estimate Supplied by	Notes
Pavilion	1	\$311,533.81	\$311,533.81	Parkworks	Aspen Shelter Custom Structure with curved roof line. See Appendix B for quotes.
Pavilion concrete and pad	54 loads	\$230.00	\$12,420.00	Town of Peace River	Concrete, rebar and forms. Type 30, 50mpa concrete.
Bathroom/ Storage Space	1	\$170,361.57	\$170,361.57	Parkworks	See Appendix B for quote.
Event Furniture			\$22,089.15	School House Products (Mitylite)	25 60' Round Tables 220 Folding Chairs Storage Carts See Appendix B for quote.
<b>PHASE 3 TOTAL</b>			<b>\$516,404.53</b>		

### Phase 4 – Events Stage

The final element of the park design is the stage structure. The cost of this phase will significantly depend on whether the stage is a temporary, movable structure or a permanent stage. The potential cost of a permanent stage is unknown and would require further stage-specific design work by a specialized consultant.

**Table 4. Phase 4 Capital Costs**

Design Component	Number	Cost per Unit	Estimated Total Cost	Budget Estimate Supplied by	Notes
Movable stage	1		\$227,500 +	Stageline SL260 Model	See Appendix B for quote. Stageline SL260 Model
<b>Or</b>					
Permanent stage	1		Unknown		
<b>PHASE 4 TOTAL</b>			<b>\$227,500 +</b>		



## Summary

The final design concept for 12 Foot Davis Events Park combines the most popular aspects of the three initial design concepts. The 12 Foot Davis Events Park design aims to facilitate the continued use of this park for large community events while also enabling smaller community and private events, as well as informal day-to-day use. Implementation of the park design can occur in phases, each of which will progressively increase the park's utility and aesthetic value.



## **APPENDIX A – DESIGN**

## **APPENDIX B – DESIGN ELEMENT QUOTES**



December 2013